

SOURCE FOUR ACCESSORIES

EDLT

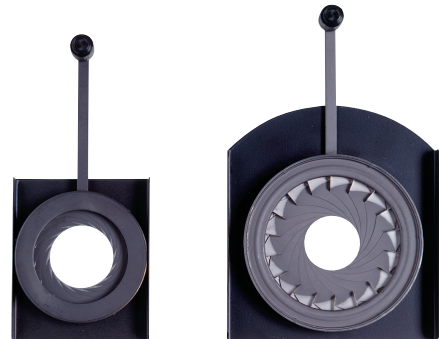
Enhanced Definition Lens Tube – Option for Source Four fixture body.
Provides high contrast, crisp gobo projection imaging.



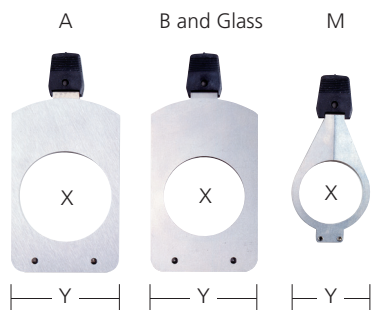
Applicable Product	Catalog #	Part #
Source Four	419EDLT	7060A2046
Source Four	426EDLT	7060A2047
Source Four	436EDLT	7060A2048
Source Four	450EDLT	7060A2049

DROP IN IRIS

Applicable Product	Catalog #	Part #
5°-90° Source Four	400RS	7060A1012
Source Four jr	400JRS	7062A1011



PATTERN HOLDERS



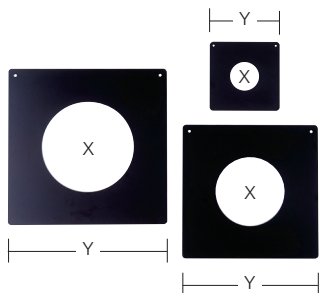
Applicable Product	Dimensions		Catalog #	Part #
A size for 5°-90° Source Four	X = 3.25"	Y = 3.75"	400PH-A	7060A1013
B size for 5°-90° Source Four	X = 2.75"	Y = 3.75"	400PH-B	7060A1014
Glass for 5°-90° Source Four	X = 2.75"	Y = 3.75"	400PH-G	7060A1019
M size for Source Four jr	X = 2.12"	Y = 2.75"	400JPH-M	7062A1010



SOURCE FOUR ACCESSORIES

DONUTS

Reduces flare in template projection.



Applicable Product

Dimensions

Catalog

Part

19°-50° Source Four & Source Four jr	X = 3.25"	Y = 6.25"	400DN	7060A1015
10° Source Four	X = 6"	Y = 12"	410DN	7060A1028
5° Source Four	X = 7"	Y = 14"	405DN	7060A1029

TOP HATS

Reduces flare.

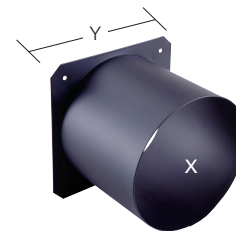
Applicable Products

Dimensions

Catalog

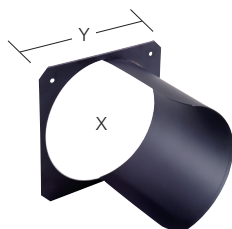
Part

19°-50° Source Four & Source Four jr	X = 5"	Y = 6.25"	5" tube	400TH	PSF1021
10° Source Four	X = 10"	Y = 12"		410TH	PSF1024
5° Source Four	X = 12"	Y = 14"		405TH	PSF1025
Source Four PAR	X = 6.75"	Y = 7.5"	3" tube	400PTH3	PSF1022
Source Four PAR	X = 6.75"	Y = 7.5"	6" tube	400PTH6	PSF1023



HALF HATS

Like the Top Hat, but controls flare from one side only.



Applicable Product

Dimensions

Catalog

Part

19°-50° Source Four & Source Four jr	X = 5"	Y = 6.25"		400HH	PSF1026
Source Four PAR	X = 6.75"	Y = 7.5"		400PHH	PSF1027

CROSS BAFFLE TOP HATS

Controls stray beams and light spills.

Applicable Product

Catalog

Part

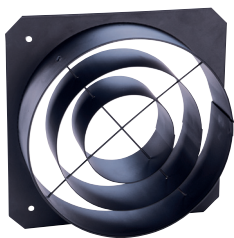
Source Four Par	400XBTH	PSF1031
-----------------	---------	---------





SOURCE FOUR ACCESSORIES

CONCENTRIC RING TOP HAT



Applicable Product

Catalog

Part

Source Four Par

400CCTH

PSF1035

CONICAL GEL EXTENDER

Best for maximum gel life. Requires 7.5" color frame.

Applicable Products

Dimensions

Catalog

Part

19°-50° Source Four

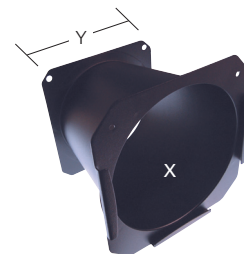
X = 5" - 6.75"

Y = 6.25"

6" tube

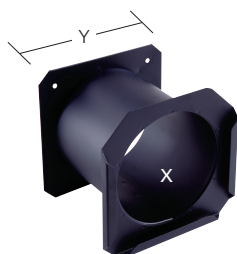
750GE

7060A1048



GEL EXTENDER

Places gel further away from fixture gel plane for better gel life.



Applicable Products

Dimensions

Catalog

Part

19°-50° Source Four & Source Four jr

X = 5"

Y = 6.25"

5" tube

400GE

PSF1020

Source Four PAR

X = 6.75"

Y = 7.5"

6" tube

400PGE6

PSF1029

Source Four PAR

X = 6.75"

Y = 7.5"

3" tube

400PGE3

PSF1030

BARN DOOR

Large leaves and tube diameter optimize Source Four PAR light output.

Applicable Product

Dimensions

Catalog

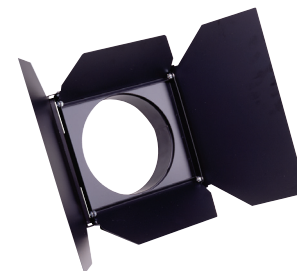
Part

Source Four PAR

6.75" Diameter

400BD

PSF1019





SOURCE FOUR ACCESSORIES

EGG CRATE LOUVER

Architectural accessory that provides 45° cutoff angles. Designed to eliminate the distracting glare often found in open faced fixtures.



Applicable Product	Dimensions		Catalog #	Part #
Source Four PAR	1/2" x 1/2" pattern	1/2" deep	400L	PSF1028

	Applicable Product	Catalog #	Part #
Weighted Base	Source Four PAR, 5 lbs.	400WB	PSF1032
Balance Yoke Assembly	Source Four Zoom	400BY	7060A2028
Canopy Mounting Kit	Source Four HID	400CK	7060K1002-0
C-clamp	All (not shipped with Source Four PAR)	400CC	7060A2009
Safety Cable	30" length	400SC	7060A1022



Corporate Headquarters ■ 3031 Pleasant View Rd, PO Box 620979, Middleton WI 53562 0979 USA ■ Tel +1 608 831 4116 ■ Fax +1 608 836 1736
London, UK ■ Unit 26-28, Victoria Industrial Estate, Victoria Road, London W3 6UU, UK ■ Tel +44 (0)20 8896 1000 ■ Fax +44 (0)20 8896 2000
Rome, IT ■ Via Ennio Quirino Visconti, 11, 00193 Rome, Italy ■ Tel +39 (06) 32 111 683 ■ Fax +39 (06) 32 656 990
Holzkirchen, DE ■ Ohmstrasse 3, 83607 Holzkirchen, Germany ■ Tel +49 (80 24) 47 00-0 ■ Fax +49 (80 24) 47 00-3 00
Hong Kong ■ Room 605-606, Tower III Enterprise Square, 9 Sheung Yuet Road, Kowloon Bay, Kowloon, Hong Kong ■ Tel +852 2799 1220 ■ Fax +852 2799 9325
Web ■ www.etconnect.com ■ Copyright © 2006 ETC. All Rights Reserved. All product information and specifications subject to change. 7060L1015 Rev. D Published 04/06