

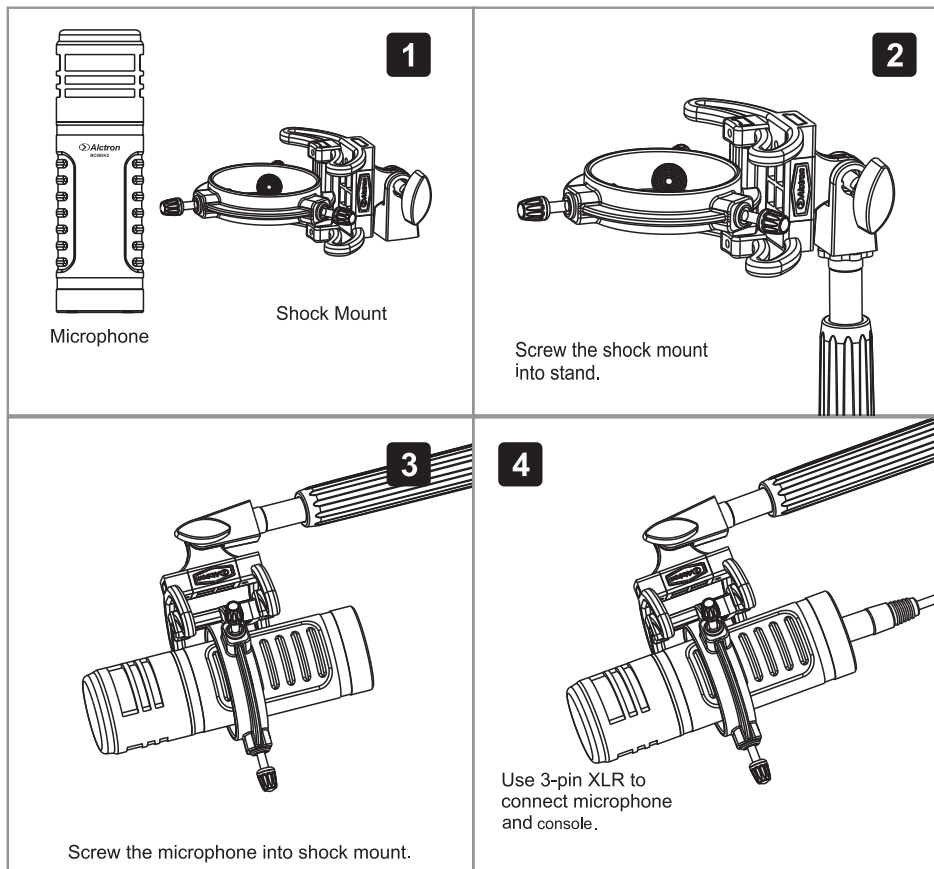
# Alctron 爱克创

## BC800V2 DYNAMIC BROADCASTING MIC

### GENERAL INTRODUCTION

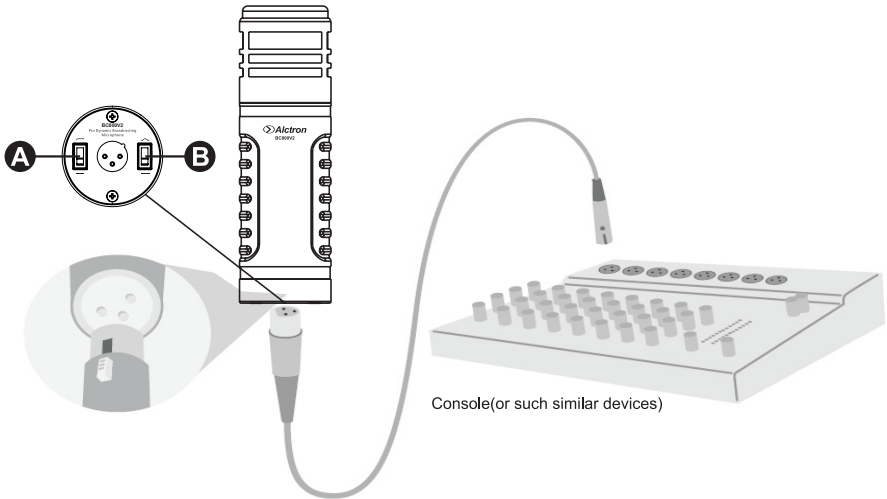
BC800V2 is a dynamic microphone. Its hyper-cardioids poplar pattern reduces environment noise during recording which makes output sound clear and pure. Capsule inner adopts dual-direction anti-vibration design enhancing sound quality. Its bass roll-off and mid-range emphasis switches at the bottom provides outstanding mid-low sound which suits for radio and online broadcasting. The novel appearance combines with classic shock mount make the BC800V2 bighearted and elegant.

### HOW TO USE MICROPHONE



NOTE: thanks to the capsule picking-up source is in the top capsule, so the mouth should aim to the top mesh.

## XLR CONNECTION



A: Low cut: reduce low frequency noise.

B: Middle-range emphasis: from 6kHz-10kHz, mid sound has improved obviously.

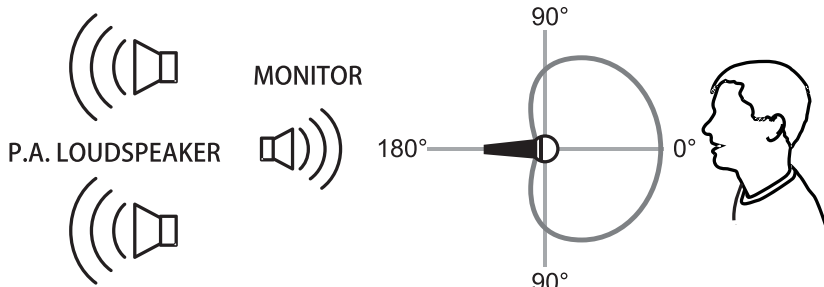
**NOTE: DO NOT TURN ON THE 48V PHANTOM POWER ON CONSOLE**

## PROXIMITY EFFECT

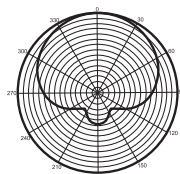
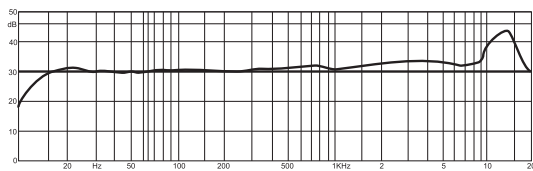
APPLICATION	SUGGESTED MICROPHONE PLACEMENT	TONE QUALITY
<b>Vocals</b>	Lips less than 15 cm (6 in.) away or touching the windscreen, on axis to microphone.	Robust sound, emphasized bass, maximum isolation from other sources.
	15 to 60 cm (6 in. to 2 ft.) away from mouth, just above nose height.	Natural sound, reduced bass.
	20 to 60 cm (8 in. to 2 ft.) away from mouth, slightly off to one side.	Natural sound, reduced bass and minimal "s" sounds.
	90 cm to 1.8 m (3 to 6 ft.) Away.	Thinner, distant sound; noticeable levels of ambient noise.
<b>Guitar &amp; Bass Amplifiers</b>	2.5 cm (1 in.) from speaker, on-axis with center of speaker cone.	Sharp attack; emphasized bass.
	2.5 cm (1 in.) from speaker, at edge of speaker cone.	Sharp attack; higher frequency sound.
	15 to 30 cm (6 to 12 in.) away from speaker and on-axis with speaker cone.	Medium attack; full, balanced sound.
	60 to 90 cm (2 to 3 ft.) back from speaker, on-axis with speaker cone.	Softer attack; reduced bass.

## AVOIDING PICKUP OF UNWANTED SOUND SOURCES

Place the microphone so that unwanted sound sources, such as monitors and loudspeakers, are directly behind it. To minimize feedback and ensure optimum rejection of unwanted sound, always test microphone placement before a performance.



## THE FREQUENCY RESPONSE CURVES AND THE POLAR DIAGRAM



Hyper Cardioid at 1kHz

## SPECIFICATION

- \* Mic type: dynamic microphone
- \* Polar pattern: hyper cardioids
- \* Sensitivity:  $-56\text{dB}\pm 3\text{dB}$
- \* Output impedance:  $250\Omega$
- \* Switch: low cut and mid-range emphasis
- \* Connector: 3-pin XLR

## SERVICE

**If your product needs servicing, follow these instructions.**

1. Ensure the problem is not related to operation error or external system devices.
2. Keep this owner's manual. We don't need it to repair the unit.
3. Pack the unit in its original packaging including end card and box. This is very important. If you have lost the packaging, please make sure you have packed the unit properly. ALCTRON is not responsible for any damage that occurs due to non-factory packing.
4. Ship to the ALCTRON tech support center or the local return authorization.

Copyright © Ningbo Alctron Electronics Technology CO.,LTD. All rights reserved. Specifications and appearance subject to change without notice.

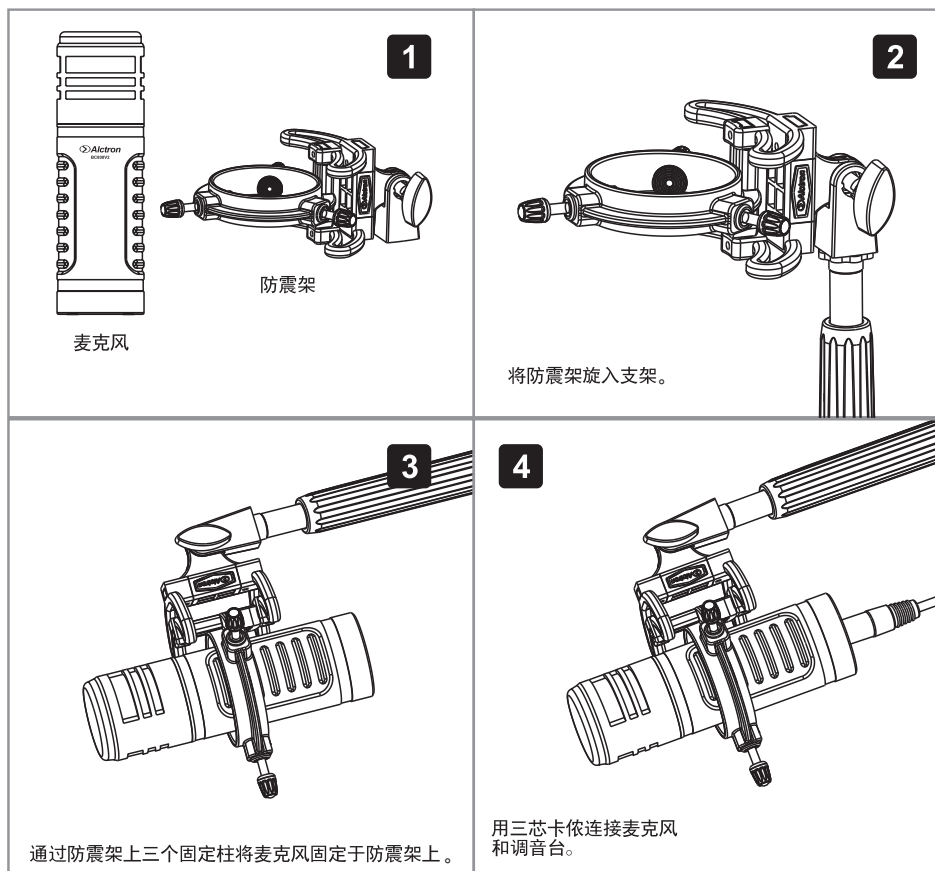
Ningbo Alctron Electronics Technology CO.,LTD.  
No.76 SanCheng Road, XiuFeng Industrial Area,GaoQiao Town, NingBo, China.  
Tel:+0086 574 87150672  
Fax:+86 574 87157176  
E-mail:info@alctron-audio.com  
www.alctron-audio.com

## BC800V2动圈播音麦克风

### 产品介绍

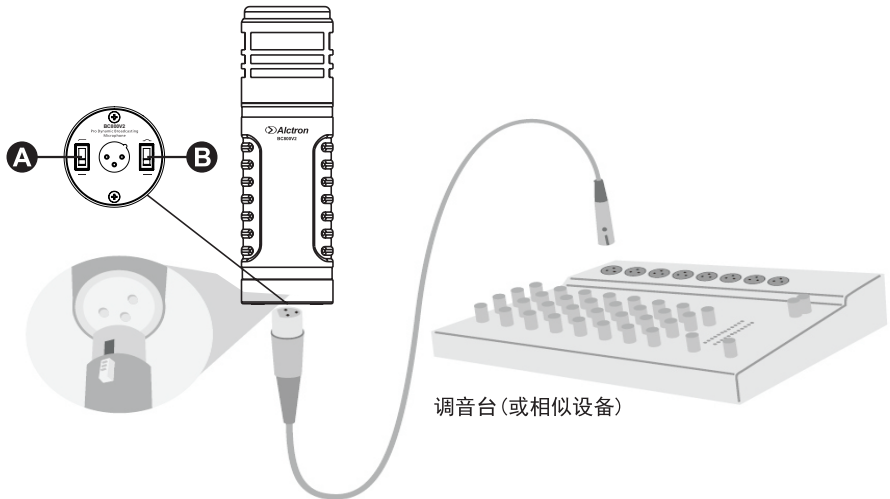
BC800V2是一款的动圈话筒。超心型的动圈话筒在拾音的过程中能够减少环境噪声录入，声音清晰纯净。其音头内部结构采用双向防震设计，能够更好的提高音质。话筒底部，分别设计了低音滚降开关和中音提升开关使得BC800V2拥有卓越的中低音，适用于电台，网络播音。新颖的外观设计结合经典的防震架，整体造型看起来大气优雅。

### 如何使用麦克风



注意：由于音头的拾音源在音头顶部所以嘴巴应该对准网头的顶部。

## XLR CONNECTION



A: 低频衰减开关：减少低频噪音。

B: 中音提升开关：从6khz到10khz中音有显著的提升。

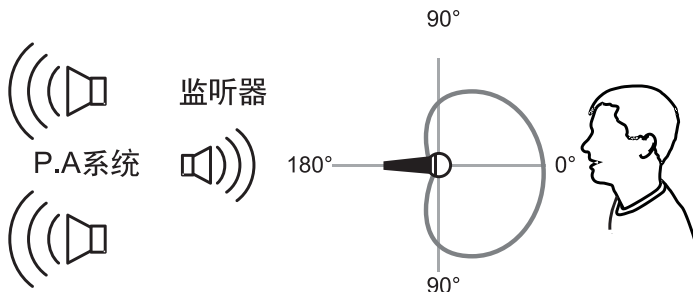
**注意：不要打开调音台上的48V开关！**

## 近讲效应

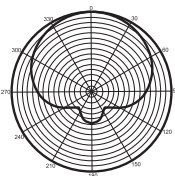
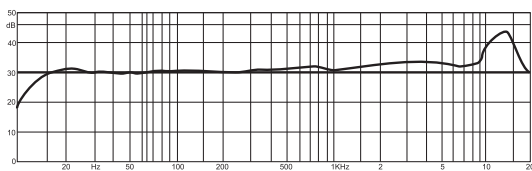
运用	建议话筒放置位置	音质
人声	嘴与防风罩的距离少于15 厘米 (6 英寸)，或轻触防尘罩，在话筒轴线上。	饱满、加重低音、最大程度隔离其它声源。
	与嘴的距离为 15 至 60 厘米 (6 英寸至 2 英尺)，刚好在鼻子平面上面。	自然，减弱低音。
	与嘴的距离为 20 至 60 厘米 (8 英寸至 2 英尺)，稍微偏向一侧。	自然、减弱低音和 "s" 声。
	距离 90 厘米至 1.8 米 (3 至 6 英尺)	薄的远距离声音；可听见不同程度的环境声。
电吉他 电贝司音箱	与扬声器的距离为 2.5 厘米 (1 英寸)，在话筒轴线上扬声器锥盆范围内。	音头锐利；低频突出。
	与扬声器的距离为 2.5 厘米 (1 英寸)，在扬声器锥盆边缘。	音头锐利；低频突出。
	离扬声器 15 至 30 厘米 (6 至 12 英寸)，在话筒轴线上扬声器锥盆范围内。	音头平和；完整的平衡声。
	与扬声器的距离为 60 至 90 厘米 (2 至 3 英尺)，在话筒轴线上扬声器锥盆范围内。	音头柔软；低频减弱。

## 避免拾取不需要的声源

将监听器和扬声器放在麦克风的背面，这样就能在一定程度上减少啸叫。为了尽量减少反馈和确保能够拒绝不需要的声音，请您在使用之前先测试麦克风的方位。



## 频响曲线以及极性图



Hyper Cardioid at 1kHz

## 参数

- \* 话筒类型： 动圈麦克风
- \* 指向性： 超心型
- \* 灵敏度：  $-56\text{dB} \pm 3\text{dB}$
- \* 输出阻抗：  $250 \Omega$
- \* 开关： 低切开关和中音提升开关
- \* 接口： 3针卡农

## 保修

如果您的产品需要维修，请按照以下说明操作。

1. 请确保不是因为操作不当或外部设备所造成。
2. 请保存好我们的说明书，返修的时候不必把说明书寄回给我们。
3. 返修的时候请用产品原来的包装箱来包装，这是非常重要的。如果你已丢失原包装，请确保正确包装和保护好本耳机。ALCTRON是不负责由于非原厂包装造成任何损害。
4. 运送到ALCTRON技术支持中心或当地的授权经销商。

版权所有©宁波奥创电子科技有限公司,所有权保留。必要的技术数据和外观更改恕不另行通知。

宁波奥创电子科技有限公司

地址：浙江省宁波市海曙区秀丰工业区三成路76号

电话：0574-88011699

传真：0574-87157176

邮箱：sales@alctron-audio.com

网址：<http://www.alctron-audio.com> 全国统一服务热线：4000-160-112