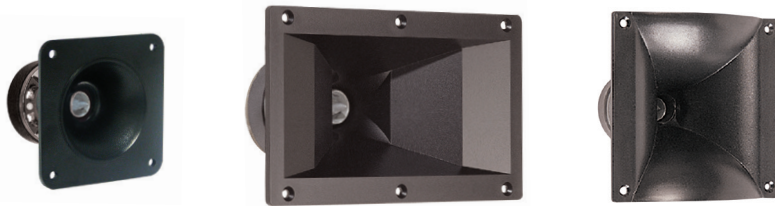


HORN FLARES, SUPERTWEETER OPTIONS AND ADAPTORS



APT horn flares are available separately for use with any driver with 1 3/8" ext. thread.

	APT:80	APT:150	APT:200
Description	APT:50 Driver with APT:80S Horn	APT:50 Driver with APT:150S Horn	APT:50 Driver with APT:200S Horn
Type	Conical	Constant Directivity	Bi-Radial
Throat Size	1", 25 mm	1", 25 mm	1", 25 mm
Dispersion	80° Conical	100° x 50°	90° x 90°
Recommended Crossover	3.5 kHz / 12 dB	3.5 kHz / 12 dB	3.5 kHz / 12 dB
Width/Height/Depth	3.4" x 3.4" x 3.7", 87 x 87 x 95 mm	7.6" x 4.5" x 5.1" 192 x 114 x 130 mm	5.9" x 6.0" x 6.3", 150 x 152 x 160 mm
Cut-out	3.15", 80 mm	6.7" x 3.4", 170 x 86 mm	4.3" x 4.4", 109 x 112 mm
Attachment Method	Screw-on	Screw-on	Screw-on
Weight	1.8 lb., 0.82 kg	1.9 lb., 0.86 kg	2.5 lb., 1.13 kg
Material	ABS	ABS	ABS



	H290S	H2EA	BH410
Type	Radial	Exponential	Exponential
Throat Size	1.0", 25.4 mm	2.0", 50.8 mm	1.0", 25.4 mm
Attachment Method	Screw-on or Bolt-on (H290B)	Bolt-on	Screw-on
Dispersion	90 x 40	60 x 40	60 x 60
Recommended Crossover	1.0 kHz	700 Hz	1.2 kHz
Width/Height/Depth	11.7" x 6.6" x 6.6", 297.2 x 167.6 x 167.6 mm	12.4" x 7.3" x 6.1", 315 x 185.4 x 154.9 mm	5.59" x 5.59" x 4.38", 142 x 142 x 111.3 mm
Cut-out	9.7 x 4.9", 246 x 124 mm	11.3 x 6.3", 287 x 160 mm	3.56 x 3.56", 90.4 x 90.4 mm
Weight	1.10 lb., 0.50 kg	4.90 lb., 2.22 kg	0.35 lb., 0.16 kg
Material	ABS	Aluminum	ABS

ADAPTORS



B2S-A

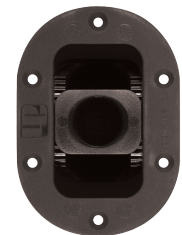
Aluminum adaptor converts bolt-on driver to accept a screw-on horn. 2x 1/4-20 or 3x M6 driver to 1 3/8" 18 thread horn.



S2B-A

Aluminum adaptor converts screw-on driver to accept a bolt-on horn. 1 3/8" 18 ext. driver to 2x 1/4-20 or 3x M6 horn.

CABINET HARDWARE



TOP HAT-CH

Adjustable-angle speaker stand receptacle for loud-speaker boxes. Vertical angle can be adjusted in 4° increments to +/- 18°. Fits SPS56B and most other standard speaker stands. Internal Ø 36mm. Black polyamide. Patent pending.

USAGE GUIDE

Driver	Horn Option
APT:50	APT:80S
	APT:150S
	APT:200S
	BH410
	H290S
ASD1001S	APT:150**
	APT200S
	H290S
	BH410
ASD1001B	H290B
NSD2005S	APT:150S**
	APT:200S
	H290S
	BH410
NSD2005B	H290B
PSD2002S	APT:200S**
	H290S**
PSD2002B	H290B
PSD2013S	APT:200S**
	H290S**
PSD2013B	H290B
PSD3006	H2EA

* B2S or S2B adaptor required

** Driver bracing recommended