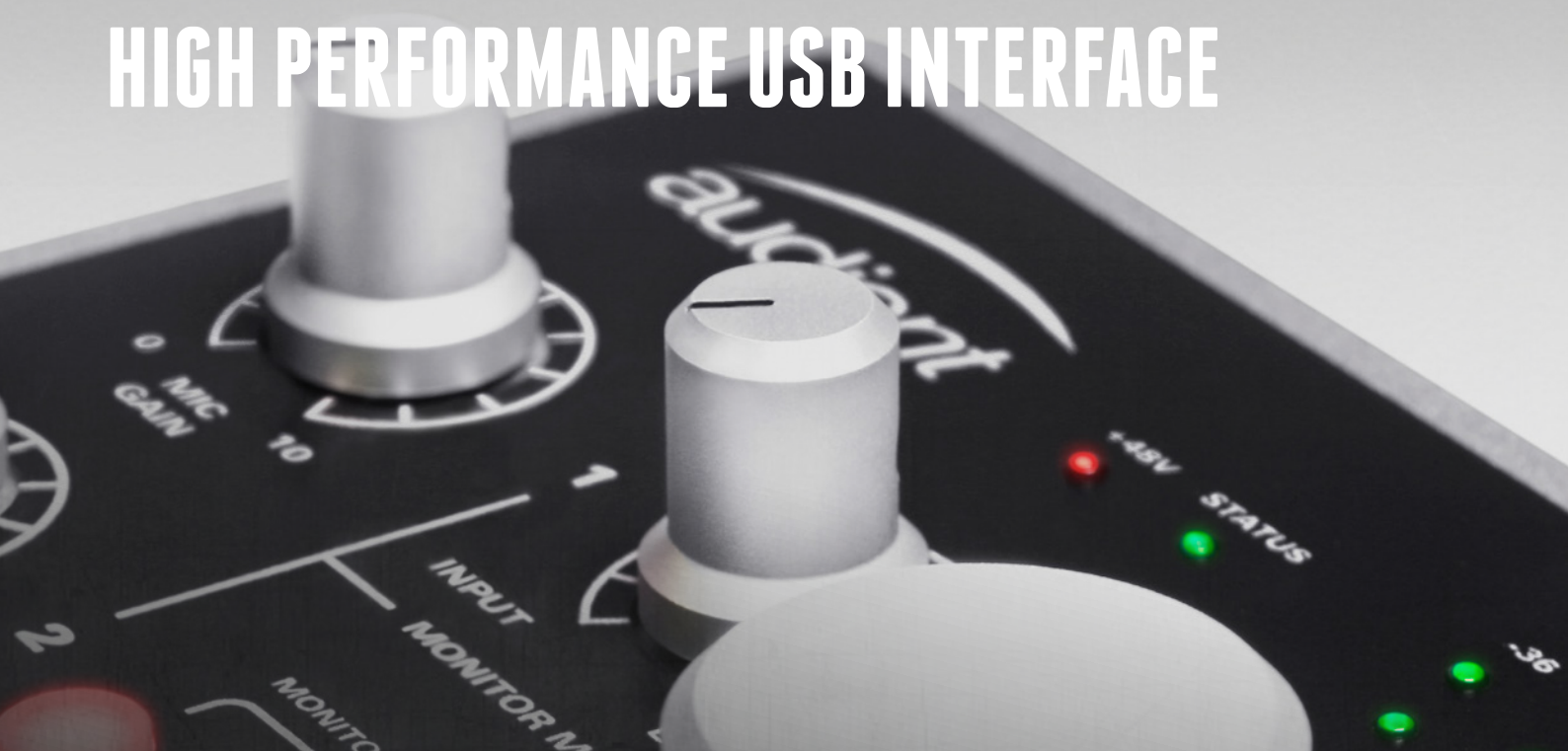


iD4

audient

HIGH PERFORMANCE USB INTERFACE



USER MANUAL V1.1

connect with us.



audient.com

Thank you for purchasing this Audient product!

iD4 is the culmination of years of experience in high performance analogue and digital circuit design, delivering the audio performance of a large format recording console in a compact and elegant desktop package.

iD4 provides a single world-class Audient console mic pre, JFET D.I, class leading converter technology, console style monitor control, and our virtual scroll wheel technology *ScrollControl*.

Inside the box you should find:

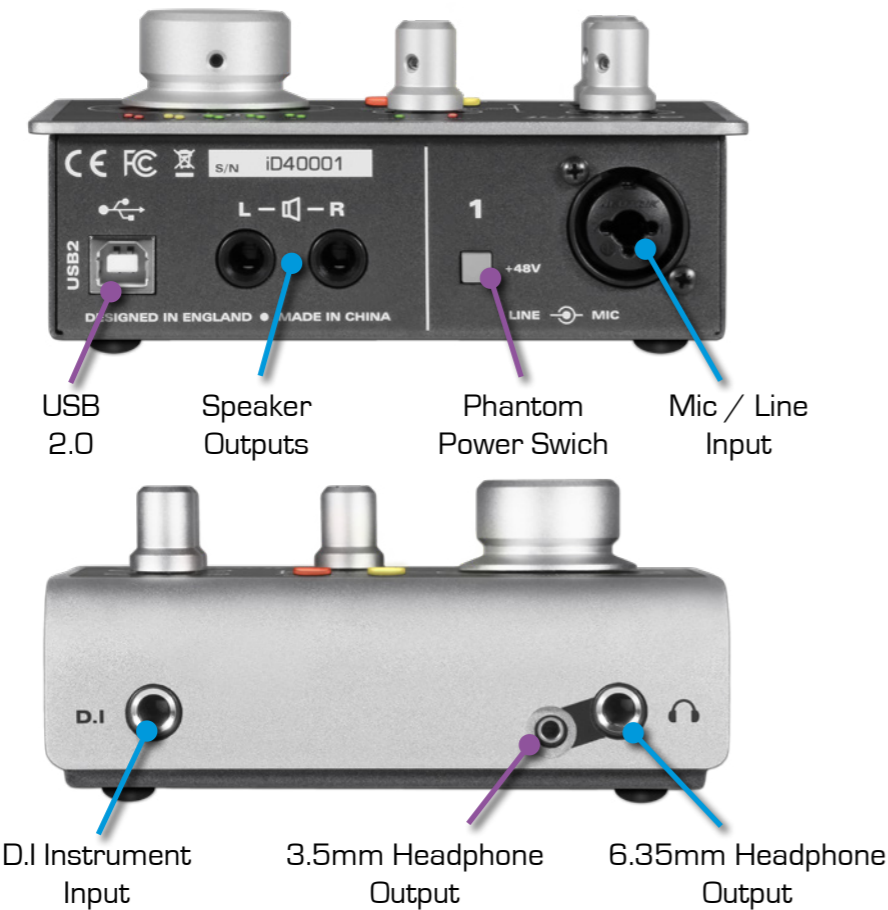
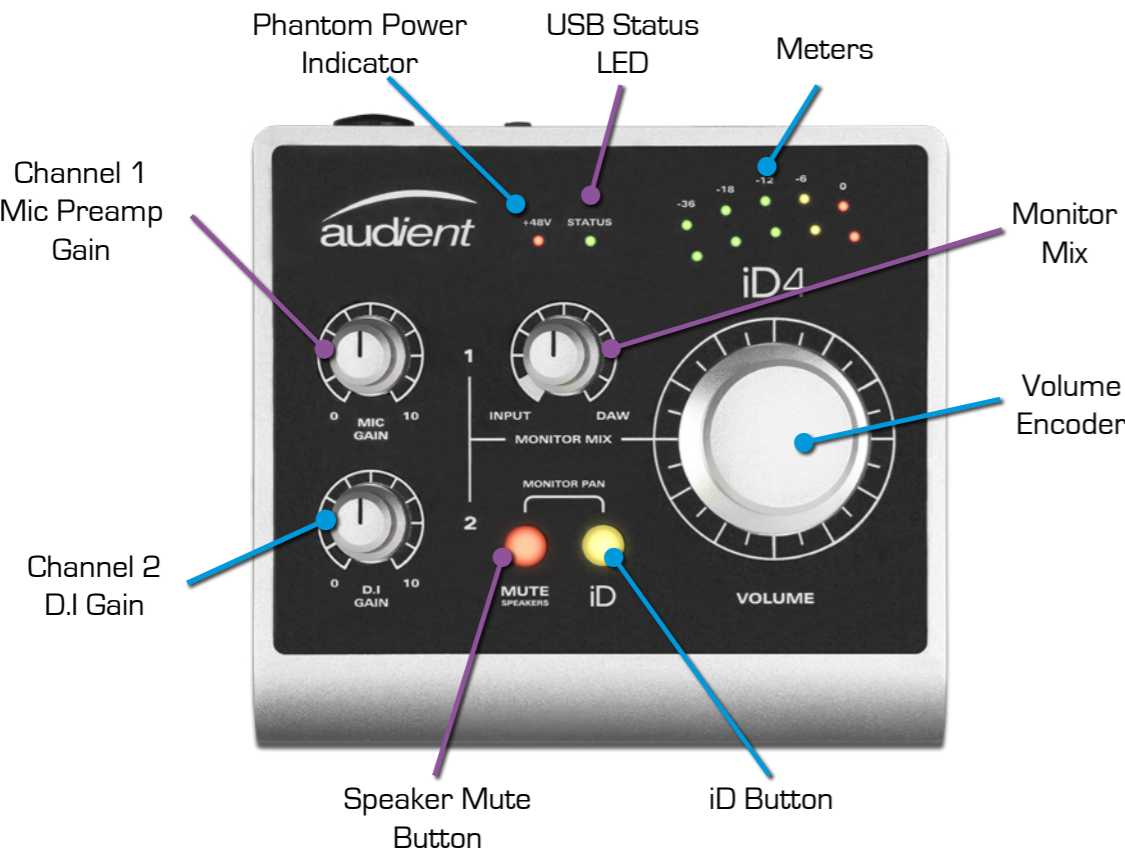
- iD4
- Type A to Type B USB 2.0 Cable
- Printed Quick Start Guide

Features include:

- 1 x Class-A Audient Console Mic Preamplifier
- 1 x Discrete JFET instrument input.
- High performance AD/DA converters
- Main Speaker Outputs
- Two Class-AB Headphone Outputs
- Zero Latency Monitoring
- iD *ScrollControl* Mode
- All-Metal Enclosure
- USB 2.0 bus powered

iD4 Overview	1	17
Safety Information	2	18
Declaration of Conformities	4	18
	5	19
Mac Installation	6	19
Windows Installation	7	19
iOS Installation	9	20
Product Registration	10	21
Firmware Update	10	22
	11	23
Microphone & Line Input	12	24
Instrument Input	13	
Loudspeaker Outputs	13	
Headphone Outputs	13	
Monitor Control	14	
Volume Encoder	14	
Monitor Mix	14	
Monitor Pan	15	
MUTE Speakers	15	
iD Button	16	
Metering	16	
Status LED	16	
Kensington Lock	16	
		25
		27
		28
		29
		30





Important Safety Instructions

Please read all of these instructions and save them for later reference before connecting the USB cable and powering up iD4.

iD4 itself does not operate with any high voltage mains supply inside the unit but appropriate safety measures should still be adhered to prevent electrical shock and fire hazards.

In the event of a unit failure, do not attempt to open the iD4 yourself. Please contact Audient support so that a suitable method of repair or replacement can be recommended.

support.audient.com

Consult a qualified technician if you suspect difficulties. Do not attempt to tamper with the unit whilst connected or disconnected - **HAZARDOUS TO HEALTH**

! WARNING !

TO REDUCE RISK OF FIRE OR ELECTRIC SHOCK, DO NOT EXPOSE THIS APPARATUS TO RAIN OR MOISTURE.

NO USER SERVICEABLE PARTS INSIDE.
PLEASE REFER SERVICING TO QUALIFIED SERVICE PERSONNEL.

Important Safety Instructions

- 1. Read these instructions
- 2. Keep these instructions
- 3. Heed all warnings
- 4. Follow all instructions
- 5. Do not use this equipment near water
- 6. Clean only with dry cloth
- 7. Do not install near any heat sources such as radiators, heat registers, stoves, or other equipment (including amplifiers) that produce heat
- 9. Protect cables from being walked on or pinched particularly at convenience receptacles, and the point where they exit from the equipment
- 10. Only use attachments/accessories specified by the manufacturer
- 11. Switch off your computer and unplug this equipment during lightning storms or when unused for long periods of time
- 12. Refer all servicing to qualified service personnel. Servicing is required when the equipment has been damaged in any way, liquid has been spilled or objects have fallen into the equipment, the equipment has been exposed to rain or moisture, does not operate normally, or has been dropped
- 13. The equipment should not be exposed to dripping or splashing and no objects filled with liquids (such as vases) should be placed on the equipment

FCC Part 15B

This apparatus has been tested and found to comply with the limits of a class-A digital device, pursuant to Part 15B of the FCC Rules. These limits are designed to provide reasonable protection against harmful interference in a residential installation. This equipment generates, uses and can radiate radio frequency energy and, if not installed and used in accordance with the instructions, may cause harmful interference to radio communications. If this equipment does cause harmful interference to radio or television reception, which can be determined by turning the equipment off and on, the user is encouraged to try to correct the interference by one or more of the following measures:

- 1. Re-orient or relocate the receiving antenna
- 2. Increase the separation between the equipment and receiver
- 3. Connect the equipment into an outlet on a different circuit from that to which the receiver is connected
- 4. Consult the dealer or an experienced radio/TV technician for help



We, Audient Ltd, Aspect House, Herriard, Hampshire, RG25 2PN, UK, 01256 381944, declare under our sole responsibility that the product iD4 complies with Part 15 of FCC Rules.

Operation is subject to the following two conditions:

- 1. This device may not cause harmful interference,
- 2. This device must accept any interference received, including interference that may cause undesired operation



We, Audient Ltd, declare that the product, the iD4, to which this declaration relates, is in material conformity with the appropriate CE standards and directives for an audio product designed for consumer use.



Audient Ltd has conformed where applicable, to the European Union's Directive 2002/95/EC on Restrictions of Hazardous Substances (RoHS) as well as the following sections of California law which refer to RoHS, namely sections 25214.10, 25214.10.2, and 58012, Health and Safety Code; Section 42475.2, Public Resources

INSTALLATION



System Requirements

- OS X/macOS : 10.7.5 (Lion) or later
- Mac: Intel CPU, 1GB RAM Minimum

1. Connect iD4

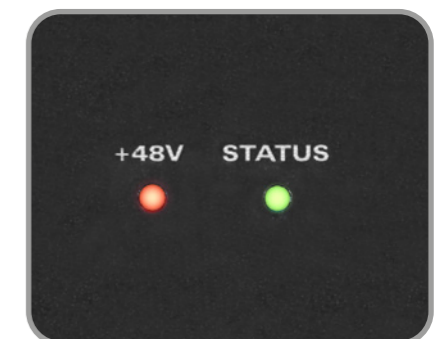
Using the USB cable provided, connect iD4 to a USB port on your Mac.



2. Check Connectivity

Once connected to your computer and powered on, the green status LED on iD4 will illuminate.

If at any time the status LED turns off during normal operation please check all connections and if further problems develop please contact [Audient support](#).

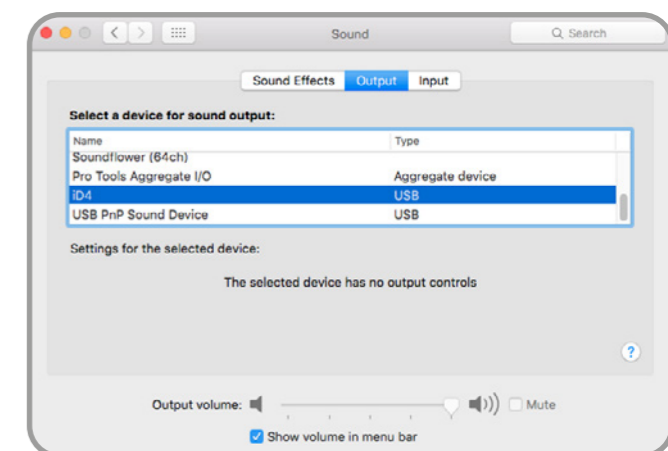


3. Set iD4 as Audio Device

Select iD4 in the audio device list found in:

[System Preferences > Sound > Output](#)

You will need to check that iD4 is selected as the audio device in your chosen Digital Audio Workstation Software (DAW) as well. This setting is normally found in an Audio Settings or Preferences menu. See [pages 18 - 22](#) for information on setting up iD4 with some common DAWs.





Windows System Requirements:

- Windows 7 or later (32 or 64 bit)
- Intel Core 2 @ 1.6 GHz, or AMD equivalent
- 1 GB RAM Minimum

1. Download the iD Drivers

Head to our website for the latest version of our iD Windows Installer:

audient.com/id4-downloads

2. Connect iD4

Using the USB cable provided, connect iD4 to your computer's USB port.

3. Run iD Driver Setup

Double click on the installer to run the iD mixer setup and follow the onscreen instructions.

4. Reboot PC

Reboot your PC to make sure that all the drivers have been applied.



5. Check Connectivity

Once connected to your computer and powered on, the green status LED on iD4 will illuminate.



If at any time the status LED turns off during normal operation please check all connections and if further problems develop, please contact [Audient Support](#).

6. Set iD4 as Audio Device

To set iD4 as your PC's default audio device, select the "Set Default" option for iD4 in the window at:

[PC Settings > Control Panel > Hardware and Sound > Sound](#)

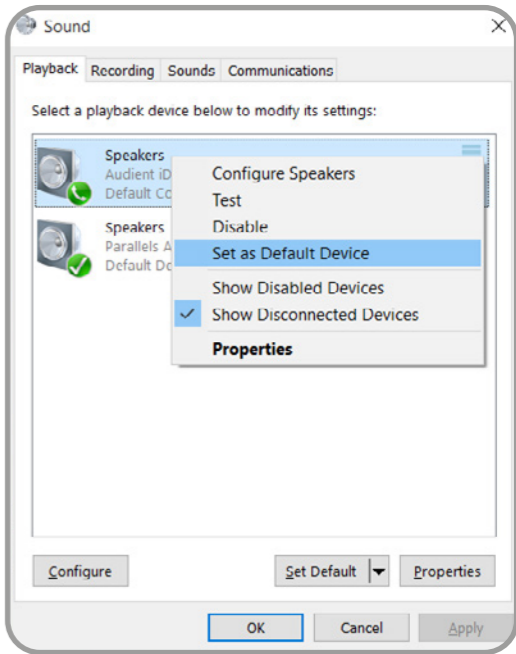
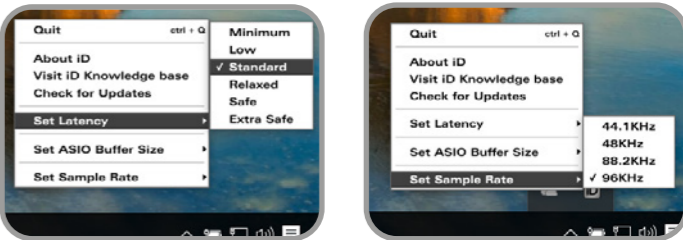
[On Windows 10 - search for Sound]

You will need to check that iD4 is selected as the audio device in your chosen DAW as well. This setting is normally found in an Audio Settings or Preferences menu. See [pages 18 - 22](#) for information on setting up iD4 with some common DAWs.

iD Icon



Once the iD app is installed, the iD icon will be visible in the Windows System Tray (it may be in the hidden icons area). Right click the iD icon to change the sample rate, buffer size, latency settings and check for firmware updates. See [page 16](#) for explanations of the settings).





iOS System Requirements:

- Device running iOS 6 or later
- Apple Lightning to USB Camera Adapter
- USB 2.0 Powered Hub

A driver is not needed for iOS operation, however a powered USB hub must be used (as an iPad or iPhone cannot power iD4), along with a “Camera Adapter” cable, which can be purchased from Apple directly or other third party manufacturers. Other devices such as MIDI keyboards may be plugged into the USB hub along with iD4, giving you even more functionality.

1. Connect iD4 to hub

Using the USB cable provided, connect iD4 to a USB port on the powered USB hub.

2. Connect to iOS Device

Plug the USB hub into the USB port on the Camera Adapter kit, and connect the kit to your iOS device (to charge the iOS device, you can plug a charging cable into a port on the USB hub and camera kit as well).

3. Check Connectivity

Once connected to your iOS device, and powered on, the green status LED on iD4 will illuminate.

Registration

By registering your iD4, you will be notified when new versions of firmware are made available via email. These firmware updates allow us to improve iD4’s performance and even potentially features. To register your iD4, please go to:

audient.com/register-a-product

Firmware Update

Once firmware updates are made available, they need to be applied to iD4. This is done through the iD app.

macOS

iD4 is class compliant, which means that no drivers are needed for operation. However to update the firmware, download the iD app from our website at:

audient.com/id4-downloads

Drag the app into your applications folder and open it. If there is a firmware update available, you will be prompted to install it. You do not need to have the iD app running on Mac for regular operation of iD4.

Windows

For regular Windows operation, the iD app must be running, therefore when a firmware update is available you will be notified. To check manually, right click on the iD icon in the system tray and select Check for Updates.

iOS

Firmware update is not possible on the iOS platform, so you will need to plug iD4 into a Mac or Windows computer and update the firmware from there.

Offline Computers

If your audio computer is not connected to the internet, you can download the firmware update file from the iD4 page, transfer it onto your offline computer, and then select From File... in the firmware update screen, and then choose the firmware file.

audient.com/id4-downloads

NOTE

Ensure that you restart iD4 after installing a firmware update by disconnecting and reconnecting the USB cable. This ensures all updates have been properly applied.

HARDWARE



Microphone Preamplifier & Line Input

iD4 features a single classic Audient microphone preamplifier. This preamp is based on designs from Audient's classic consoles and are the same that are used across our entire product range.

The design features discrete, Class-A circuitry providing exceedingly low distortion and noise performance. From a sonic point of view, iD4 is fast, open and detailed.

Neutrik™ XLR/TRS Jack combi-connectors provide microphone and line inputs in one compact connector.

When using a condenser microphone you will need to use phantom power otherwise you will not get any signal. To activate phantom power, press the +48V switch next to the input connector. The +48V phantom power indicator LED will illuminate red when phantom power is activated.



The microphone preamplifiers feature:

- 58 dB of clean gain
- 48v ($\pm 4V$) phantom power rated at 10mA
- > 2.8k Ω input impedance which provides a punchy tone from any microphone type



D.I Input

iD4 uses a discrete Class-A JFET instrument (D.I) input on channel 2, which is easily accessible at the front of the unit.

The D.I input is perfect for plugging in electric or electro-acoustic guitars, as well as basses and even synthesisers. The JFET circuitry adds a tiny bit of colour and distortion to the signal, giving your instruments a bit of added warmth.

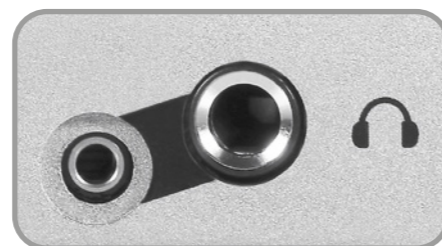


Loudspeaker Outputs



iD4 has stereo speaker outputs on the back panel in the form of balanced TRS jack connectors. The outputs are fed from high quality Digital to Analogue Convertors (DACs), sending clean, detailed audio to your speakers.

Headphone Outputs



iD4 features a high current headphone amplifier. This can be accessed using both the 3.5mm and 6.35mm sockets found on the front of the unit. The same audio signal comes out of both connectors simultaneously, so it does not matter which you plug your headphones into. You can also plug in two pairs at the same time.

Headphones can be used instead of, or alongside speakers to get an idea how your mix sounds on headphones, or to provide an artist headphone mix.

Monitor Control

Volume Encoder

The Volume encoder allows you to change the volume of the audio for both the speaker and headphone outputs. Pressing the encoder will dim the audio, dropping the level by 15 dB, useful if you want to quickly turn down the level to your speakers/headphones without losing your listening level. As you adjust the volume level, the main meters will change to show the level you are setting it to, before changing back to show the output level.



Monitor Mix

The Monitor Mix knob lets you monitor the mic and D.I inputs, while still being able to hear the audio coming from your computer (DAW) at very low latency to avoid distracting delays.

While mixing in your live input, it is important to turn off monitoring in your Digital Audio Workstation (DAW), otherwise you will end up hearing an extra copy of the signal.

When you rotate the mix into the white segment, it allows you to monitor the true input levels where the Mic/Line input will appear on the top meter, and the D.I on the bottom meter.

**NOTE**

Listening on speakers while monitoring your input from a microphone in the same room can cause feedback, which not only is unpleasant, but could also potentially damage your speakers. Ensure that either the speakers are muted, or that the monitor mix is set all the way to DAW when not using the microphone.

Monitor Pan

iD4's Monitor Pan feature enables you to pan both the mic pre and DI input from left to right, making it easy to create a balanced headphone mix that suits you. Press and hold the Mute and iD buttons whilst turning the Volume Encoder to pan the inputs.

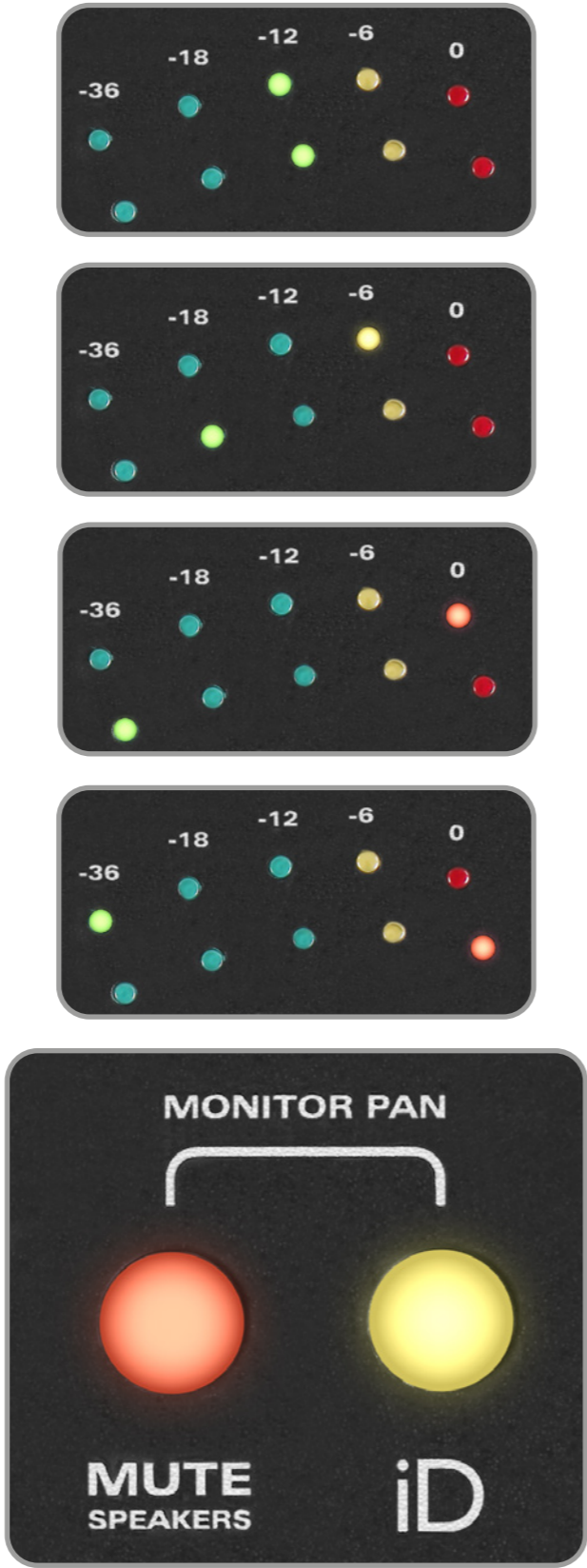
Twisting clockwise pans channel 1 left and channel 2 right, while twisting anti-clockwise pans channel 1 right and channel 2 left. Pressing the encoder whilst holding the Mute and iD button will reset the pan.

As you adjust monitor pan, the meters show the pan positions of the mic and D.I., where the top meter shows the Mic/Line Input, and the bottom meter shows the D.I Input.

MUTE Speakers Button

The MUTE Speakers button is a quick way of muting the speaker outputs whilst allowing audio to pass to the headphone outputs, allowing you to hear what you are playing while you are recording.

If you are using a microphone in the same room as your speakers, then it is important to mute your speakers while recording to prevent unwanted audio being picked up by the mic or getting feedback.



iD Button

Pressing the iD button will activate *ScrollControl*, which allows the encoder to be used as a scroll wheel for your computer. This works well for controlling plugin parameters and adding automation in a more hands on way.

iD *ScrollControl*

To use *ScrollControl*, hover your mouse over whatever you want to control and rotate the encoder. If you find it is too sensitive or not sensitive enough, you can try adjusting your computer scrolling speed found in your computer settings.

ScrollControl may act slightly differently on certain plugins or DAWs depending on how they have been programmed to work with mouse wheel scrolling. You may find some controls/software do not support *ScrollControl*.

Metering

As mentioned in previous sections, the meters change to display positions and values for different settings on iD4, however when not adjusting any settings, it will display the peak output level.

Status LED



The Status LED indicates connection via USB to your device. A solidly lit light means that there is stable communication between iD4 and the device.

Kensington Lock

For those who work in educational establishments or in situations where your equipment is public facing and subject to possible theft opportunities, we have provided a Kensington lock hole to enable you to protect your iD4.

A desk mounting plate is also available, please contact Audient for more information.



GENERAL OPERATION



This next section will give some insight on how to get the most out of iD4, and some of the different settings and options you have available to you when using it.

Sample Rate

When starting a new project, it is important to consider the sample rate you are using. The sample rate dictates how many times a second the level of the incoming audio is measured [sampled], which allows continuous analogue audio to be represented digitally as a series of 0s and 1s.

44.1kHz is the standard sample rate for all CDs and most downloadable music, while 48kHz is the standard for people working with film. Higher sample rates can have their benefits but it is worth noting that as you increase the sample rate, you increase the file size of the audio and CPU resources required.

Buffer Size and Latency

Buffer size is a very important setting that will ensure that your projects are running smoothly and efficiently. A wrongly selected buffer size can result in hearing pops, clicks and stuttering audio. Buffer size dictates how many “samples” of audio are stored before being sent to the output.

A buffer adds a delay to the signal (known as latency), however it is essential for giving the computer some time to do other processing.

If you are monitoring iD4’s inputs directly using the Monitor Mix knob, you can keep the buffer size relatively high to reduce the strain on your computer. If you are wanting to monitor through your DAW with effects, for example being able to hear your electric guitar with an amp simulator on it, you will want the lowest buffer size your computer can handle. The buffer size you can get down to before you get audio issues is hugely dependant on your computer power, as well as the processing requirements of your session. Some DAWs allow you to “Freeze” tracks which reduces the CPU load, allowing you to choose lower buffer sizes.

For mixing, you can set the buffer size much higher, to allow your computer to process the audio in time. Increasing the latency does not really matter in this situation because you aren’t trying to do anything live. For larger sessions, you might find that you need a larger buffer size than normal.

You may need to adjust buffer sizes when working at different sample rates to account for the difference in CPU requirements of different sample rates.



macOS

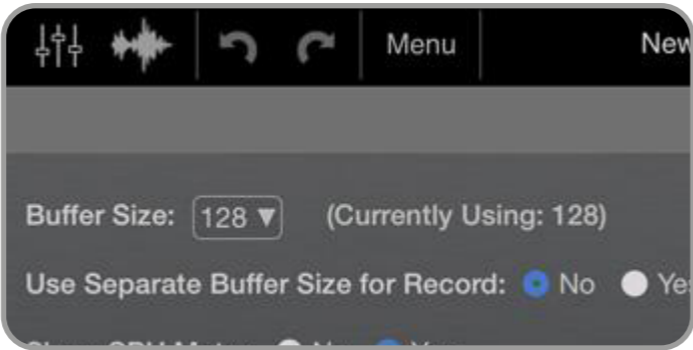
The buffer size is selected from within your DAW, most likely in an audio settings or preferences menu.



* Setting buffer size on macOS in Logic Pro X

iOS

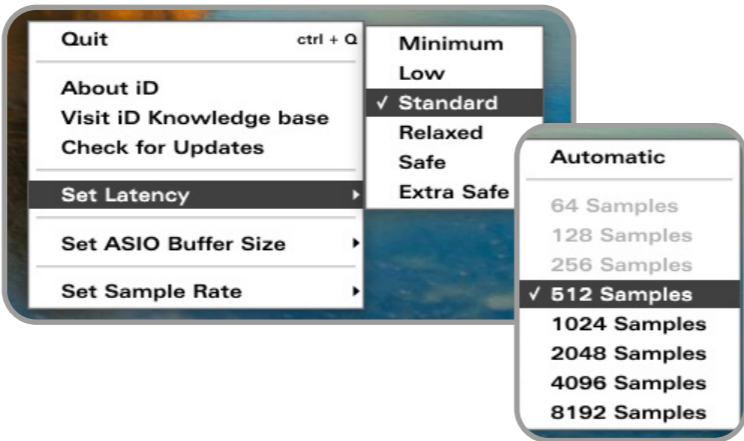
The location of the buffer size setting (or having a setting at all) is dependant on the app that you are using. Generally it will be found in the app's preferences/settings menu, or alternatively by finding the app, in



* Setting buffer size on iOS in Auria Pro

Windows

On Windows, the buffer size needs to be selected in the iD app before the DAW. A buffer size of 32 samples to 4096 samples can be selected.



DAW SETUPS

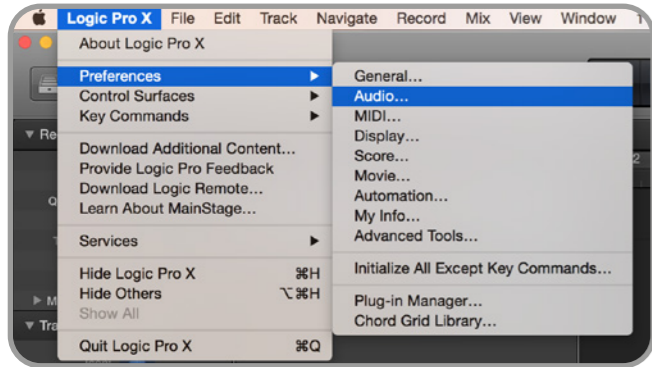




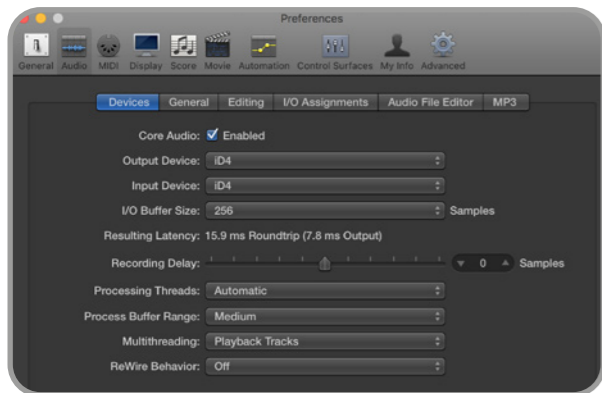
Operation with Logic Pro

With iD4 plugged into your Mac, launch Logic Pro and ensure that iD4 is selected as your Input and Output Device:

Logic Pro > Preferences > Audio

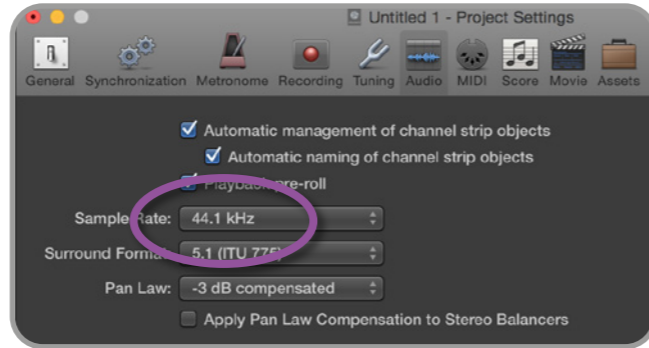


Once iD4 is selected as your device, set the appropriate buffer size for your session. If you are using the Monitor Mix knob to monitor your inputs, you can set the buffer size reasonably high to reduce the strain on your computer. If you are experiencing issues with playback stability or “overload” errors coming up, try increasing the buffer size.



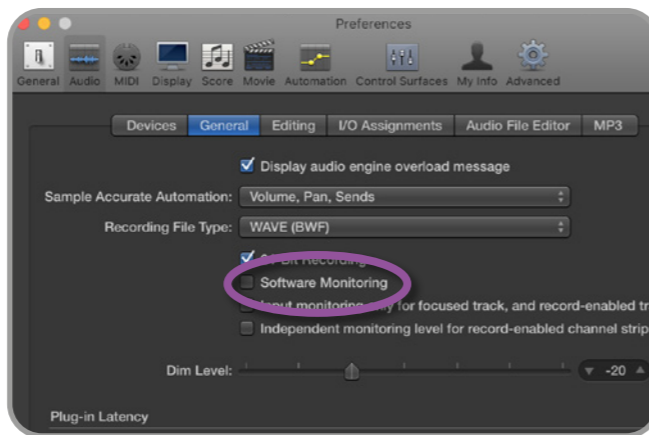
If you are opening an existing session, iD4’s sample rate will automatically change to match the project. If you are starting a new session, be sure to select the appropriate sample rate found in:

File > Project Settings > Audio



If you are monitoring your input signal on iD4, disable Logic’s software monitoring to avoid hearing duplicate signals as this can be very off-putting.

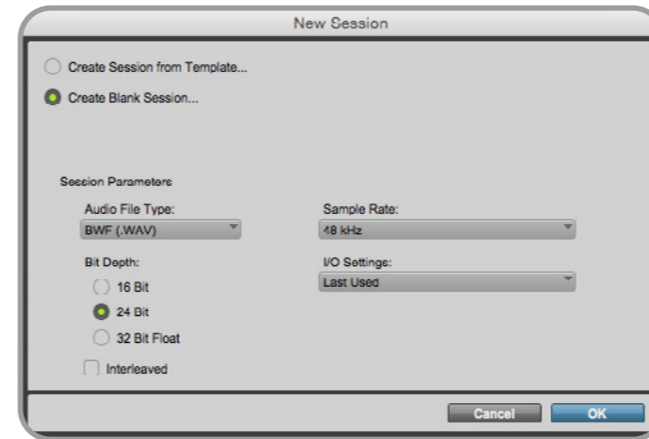
Logic Pro > Preferences > Audio > General > Software Monitoring



Operation with Pro Tools

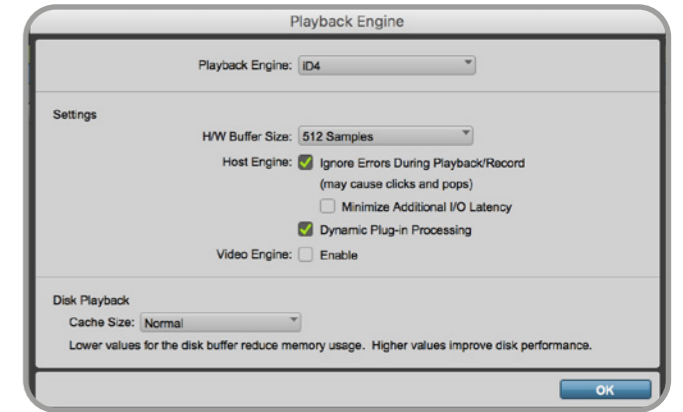
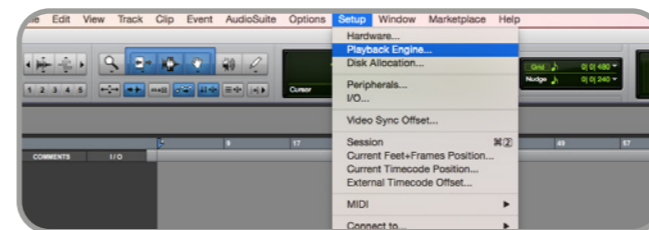
If using Windows, ensure that you have followed the installation instructions found on [page 6](#).

With iD4 connected, launch Pro Tools and ensure that a new session is created at the desired sample rate. If you are using Windows, make sure that you have already set your Latency and Buffer Size settings in the iD System Tray before opening a project. Changing these mid session will result in Pro Tools needing to restart.

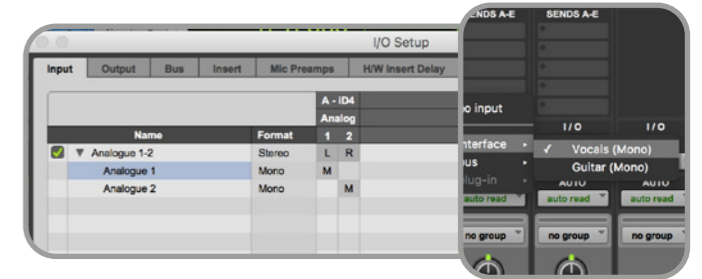


Playback Engine

Go to [Setup > Playback Engine...](#) and ensure that iD4 is set as the active playback device.



Go to [Setup > I/O...](#) to label your inputs and outputs and ensure that iD4 is correctly reporting 2-inputs and 2-outputs to and from Pro Tools.



If using the iD4 Monitor Mix knob to monitor your inputs, ensure that the input monitor button on the audio tracks are not selected, to avoid duplicate signals.



For more Pro Tools information consult your Avid user manuals & documentation.



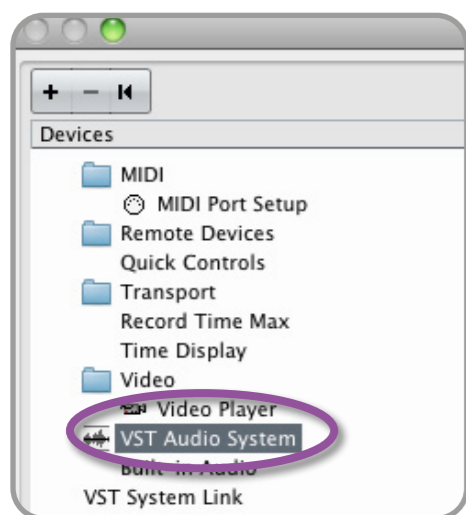
Operation with Cubase / Nuendo

If using Windows, ensure that you have followed the installation instructions found on [page 6](#).

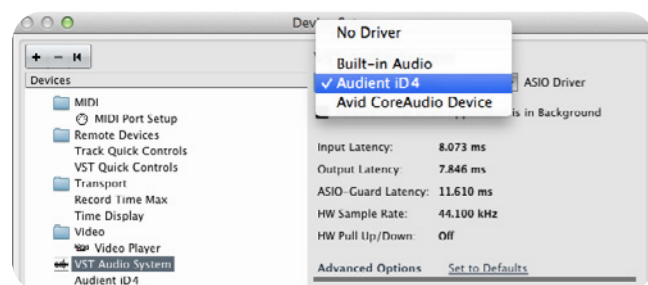
With iD4 plugged into your computer, launch Cubase or Nuendo and head straight for the Devices Menu:

Devices > Device Setup...

Select VST Audio System in the devices menu.



Ensure that Audient iD4 is selected as the audio device. You will be asked if this is OK, select 'switch'.

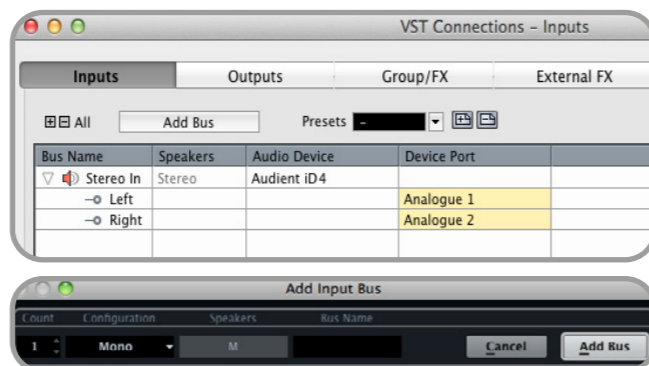


Select Audient iD4 in the devices menu, here you will see the main iD4 information. Buffer sizes can be set in the Control Panel within the VST devices display.

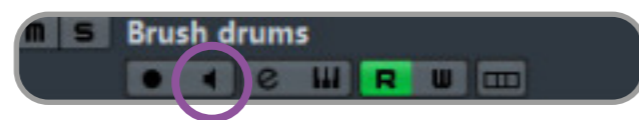
Close the VST device setup panel and navigate to the VST connections panel:

Devices > VST Connections (F4)

Here you can ensure that all buses have been created in Cubase / Nuendo and therefore all ports are addressable in your session. Add new buses and assign them to the necessary I/O if required.



If using the iD4 Monitor Mix knob to monitor your inputs, ensure that input monitoring is turned off on the track.

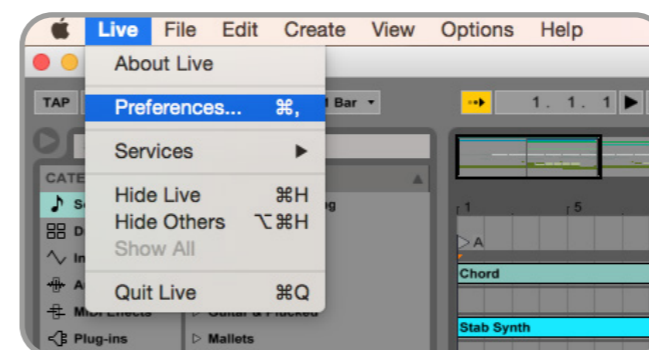


Operation with Ableton Live

If using Windows, ensure that you have followed the installation instructions found on [page 6](#).

With iD4 plugged into your computer, launch Ableton Live and head straight to:

Live > Preferences > Audio



In the Audio tab make sure that iD4 is assigned as the playback device. you can also select the appropriate sample rate for your project, as well as the buffer size.

If using Windows, ensure to set the Latency and Buffer Size in the iD System Tray before changing it in Ableton.



If you are monitoring your inputs using the Monitor Mix knob, then you can keep the buffer size reasonably high to reduce the strain on your computer. In this case, you also need to make sure that input monitoring is turned off on the track in Ableton.



For more information about setting up audio I/O refer to your Ableton Live user manuals & documentation.

Troubleshooting

- “The unit will not power on”

Double check that the USB cable is plugged in firmly. If it still won't power on, try using a different USB port on your computer and possibly a different USB cable. If you are using a USB hub, try plugging iD4 directly into the computer.

- “I get clicks and pops on DAW playback”

This is most likely to do with setting the buffer size too low for your computer. This can be caused by running very large projects with a lot of plugins and virtual instruments. Experiment with higher buffer sizes [and Latency settings in Windows]. Typically you want small buffer sizes for tracking or recording software synths to keep the latency low. However when mixing it is fine to set a slightly higher buffer size as latency is not so much of a problem.

It is also possible for driver conflicts to cause clicks and pops. For further details go to:

support.audient.com

- “When I connect to my computer, I cannot play any audio out from iD4”

Firstly double check that the USB cable connecting iD4 to your computer is functional and attached at both ends. Then make sure that iD4 is set as the active playback device in your DAW and computer:

System Preferences > Sound > Output Tab
> Audient iD4 (macOS)

Control Panel > Hardware and Sound >
Sound > Manage Audio Devices > Audient
iD4 (Windows)

Finally, check that the Monitor Mix knob is set to DAW and not all the way to Input.



- “I keep getting loud feedback in my speakers”

This is most likely caused by monitoring your microphone input while your speakers are on in the same room. Please make sure that you either move the monitor mix knob all the way to DAW if you aren't wanting to monitor your input, or if you are, simply press the MUTE Speakers button and listen on headphones.

- “I hear an echo when recording”

This is most likely due to input monitoring being enabled in the workstation while also using the zero latency monitoring in iD4. For more information on this see page 13.

FAQs

For more information and bug support, please search our online [Help Centre](https://support.audient.com) which can be found here:

support.audient.com

Knowledge Base

For technical support please create a ticket in our online support system, which can also be found in the support section of our website (see link above).

Audient Help Desk > Submit a request

SUBMIT A REQUEST

Your email address *

Product *

Serial Number

To help us quickly identify your unit please enter the serial number. It can be found on the back of most units, or the side of ASPO8.

Subject *

Description *

Please enter the details of your request. A member of our support staff will respond as soon as possible.



MICROPHONE PREAMPLIFIER:
(measurement includes ADC signal path)

MIC GAIN:	0 to 58 dB
LINE GAIN:	-10 to 48 dB (-10dB hardwired line pad)
PHANTOM POWER:	48V \pm 4V @ 10mA channel (on USB!)
MIC EIN:	<126.0 dBu
CMRR:	>75 dB @ 1kHz
MAXIMUM INPUT LEVEL:	+12 dBu (0 dBFS digital maximum)
INPUT IMPEDANCE (Mic):	2.8k Ω balanced
INPUT IMPEDANCE (Line):	>8k Ω balanced
FREQUENCY RESPONSE:	\pm 0.1 dB 20Hz to 22kHz @ min. gain \pm 1.0 dB 20Hz to 22kHz @ max. gain
CROSSTALK:	<91 dBu
THD+N @ 0dBu (1kHz):	<0.0015% (-96.5 dBu)
SNR:	96 dB un-weighted, 99 dB A-weighted
XLR COMBI FEMALE:	Pin 2 (Hot), Pin 3 (Cold) & Pin 1 (Shield)
1/4" TRS JACK:	Tip (Hot), Ring (Cold) & Sleeve (Shield)

D.I / INSTRUMENT INPUT:
(Channel 2)

D.I GAIN:	-5 to 35dB
MAXIMUM INPUT LEVEL:	+8 dBu (0.6% THD typical)
INPUT IMPEDANCE:	>500k Ω unbalanced
FREQUENCY RESPONSE:	\pm 0.1dB 20Hz to 22kHz
THD+N @ 0dBu (1kHz):	<0.2% all musical 2nd and 3rd harmonic Typically 0.05% at 0dBu
SNR:	87 dB un-weighted, 90 dB A-weighted
1/4" TS JACK:	Tip (Hot) & Sleeve (Shield)

ANALOGUE TO DIGITAL CONVERTER (ADC 1 & 2):
(Measured sans microphone preamplifier under AES-17)

MAXIMUM INPUT LEVEL:	+12 dBu (0 dBFS digital maximum)
DIGITAL REFERENCE LEVEL:	+12 dBu = 0 dBFS
FREQUENCY RESPONSE:	\pm 0.1 dB 10Hz to Fs/2 (flat to nyquist)
CROSSTALK:	-100 dBu @ 1kHz & 10kHz
THD+N @ -1dBFS (1kHz):	<0.001% (-100 dB)
THD+N @ -6dBFS (1kHz):	<0.0011% (-99.1 dB)
DYNAMIC RANGE:	112 dB un-weighted, 114 dB A-weighted

DIGITAL TO ANALOGUE CONVERTER (DAC 1 & 2):
(Measured under AES-17 at line outputs 1 & 2)

MAXIMUM OUTPUT LEVEL:	+12 dBu (0 dBFS digital maximum)
DIGITAL REFERENCE LEVEL:	+12 dBu = 0 dBFS
OUTPUT IMPEDANCE:	<100 Ω
FREQUENCY RESPONSE:	\pm 0.1 dB 10Hz to Fs/2 (flat to nyquist)
CROSSTALK:	<104 dBu @ 1kHz & 10kHz
THD+N @ -1dBFS (1kHz):	<0.0015% (-96.5 dB)
DYNAMIC RANGE:	112 dB un-weighted, 115 dB A-weighted
1/4" TRS JACK:	Tip (Hot), Ring (Cold) & Sleeve (Shield)

DUAL HEADPHONE OUTPUT:

MAXIMUM OUTPUT LEVEL:	+12 dBu (0 dBFS digital maximum)
OUTPUT IMPEDANCE:	<30 Ω balanced
VOLTAGE GAIN:	+6 dB (optimised for loudness)
FREQUENCY RESPONSE:	\pm 1.0dB 10Hz to Fs/2 (load dependent)
CROSSTALK:	<98 dBu @ 1kHz & 10kHz
THD+N @ -1dBFS (1kHz):	<0.0012% (-98.4 dB)
DYNAMIC RANGE:	106 dB un-weighted, 108 dB A-weighted
MAXIMUM LEVEL into 30 Ω :	+3 dBu 0.008% THD+N Power: 80mW
MAXIMUM LEVEL into 60 Ω :	+6 dBu 0.005% THD+N Power: 80mW
MAXIMUM LEVEL into 600 Ω :	+12 dBu 0.0025% THD+N Power: 31mW
1/4" TRS JACK:	Tip (Left), Ring (Right) & Sleeve (Shield)
1/8" MINI JACK:	Tip (Left), Ring (Right) & Sleeve (Shield)

Both headphone outputs can be driven simultaneously for two users or just never worry about carrying the right jack adapter ever again!

USB2.0 HIGH SPEED:

BUS POWER:	500mA @ 5V System Limit 420mA @ 5V Maximum (with 48V)
------------	--

No. of INPUT CHANNELS:	2	(2 Analogue)
No. of OUTPUT CHANNELS:	2	(2 Analogue)

DSP MIXER LATENCY:	ROUND TRIP (in-to-out)
44.1kHz	1.583ms
48.0kHz	1.458ms
88.2kHz	0.792ms
96.0kHz	0.729ms

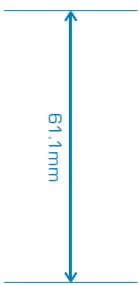
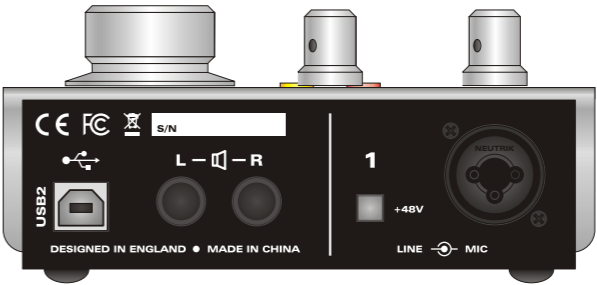
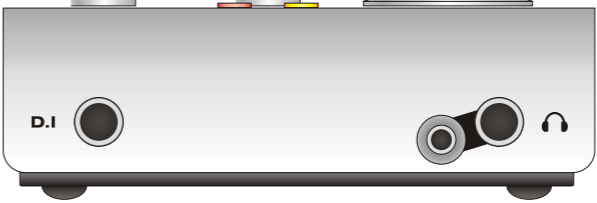
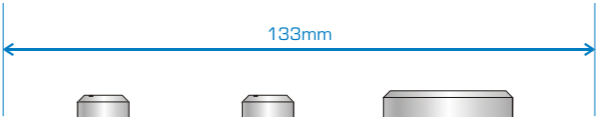
POWER SUPPLY:

USB2.0 Bus Powered (2.5 Watts Maximum)

iD4 features our class leading converters and class-A mic pre. We've optimised all circuitry so that we can supply true 48V phantom power to a single Audient mic pre without compromise. Your microphones will thank you when they get enough voltage!



Weight: 1.0 kg



Weight: 1.0 kg

Warranty Statement

Your iD4 comes with a manufacturer’s warranty for one year (12 months) from the date of despatch to the end user.

The warranty covers faults due to defective materials used in manufacture and faulty workmanship only.

During the warranty period Audient will repair at its discretion or replace the faulty unit provided it is returned carriage paid to an authorised Audient service centre. We will not provide warranty repair if in our opinion the fault has resulted from unauthorised modification, misuse, negligence or accident.

We accept liability to repair or replace your iD4 as described above. We do not accept any additional liability. This warranty does not affect any legal rights you may have against the person who supplied this product - it is additional to those rights.

Warranty Limitations

This warranty does not cover damage resulting from accident or misuse. The warranty is void unless repairs are carried out by an authorised service centre. The warranty is void if the unit has been modified other than at the manufacturer’s instruction. The warranty does not cover components which have a limited life, and which are expected to be periodically replaced for optimal performance. We do not warrant that the unit shall operate in any other way than as described in this manual.

Audient Ltd
Aspect House
Herriard
Hampshire
RG25 2PN
United Kingdom

Tel: +44 (0) 1256 381944
audient.com

Service Information

iD4 contains no user-serviceable components, please refer to qualified service personnel for diagnosis and repair. Your warranty will be void if you tamper with the device at component level. If you have any questions with regard to the repair, please contact Audient Ltd.

If your unit is in warranty, please contact your dealer directly for a repair or replacement (at the discretion of the dealer).

For out of warranty repairs, please contact Audient Ltd, after which a [Return Materials Authorization](#) (RMA) number will be assigned. This number will serve as a reference for you and helps facilitate and expedite the return process. When the unit is returned please include this RMA number along with a description of the fault inside the packaging box.

To request an RMA, access technical support & FAQs, ask for troubleshooting assistance or make an enquiry, please visit: support.audient.com

