

Noise Engineering Horologic Solum

Master clock with multi-mode divider and expander

Overview

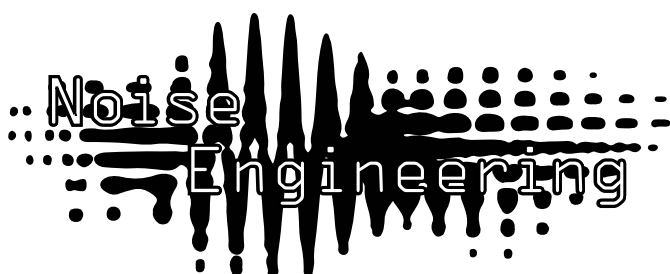
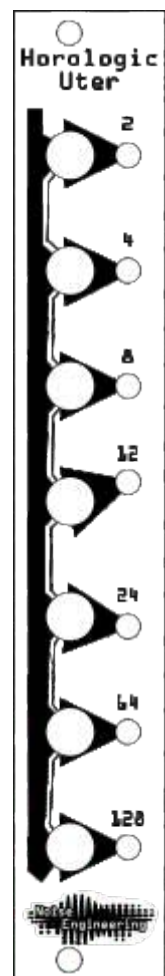
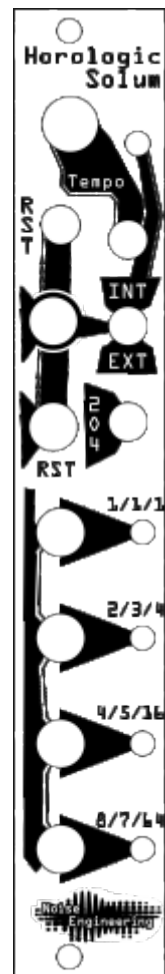
Type	Clock
Size	4HP Eurorack
Depth	.8 Inches
Power	2x5 Eurorack
+12 mA	50 mA
-12 mA	5 mA

Horologic Solum is a 4HP voltage-controlled clock generator. Three speed modes allow a wide range of rates. Horologic Solum also includes three divisor modes for offsetting up to four outputs. Use the internal clock or chain to an external clock to sync multiple HS.

Horologic Uter is an optional expander that offers an extra seven outputs at fixed, musically useful, divisors.

Input & output voltages

The trigger inputs on HS trigger at around 2.5v, and the outputs are around 6v.



Power

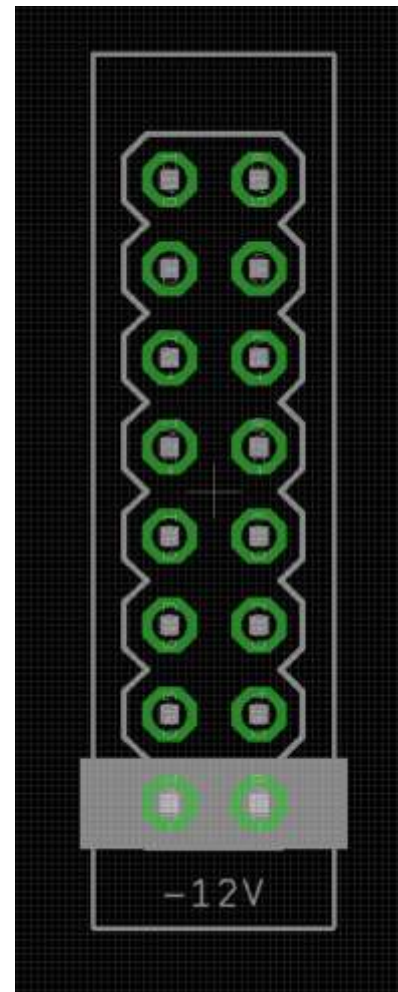
To power your Noise Engineering module, turn off your case. Plug one end of your ribbon cable into your power board so that the red stripe on the ribbon cable is aligned to the side that says -12v and each pin on the power header is plugged into the connector on the ribbon. Make sure no pins are overhanging the connector.

Line up the red stripe on the ribbon cable so that it matches the white stripe and/or -12v indication on the board and plug in the connector.

Screw your module into your case BEFORE powering on the module. You risk bumping the module's PCB against something metallic and damaging it if it's not properly secured when powered on.

You should be good to go if you followed these instructions. Now go make some noise!

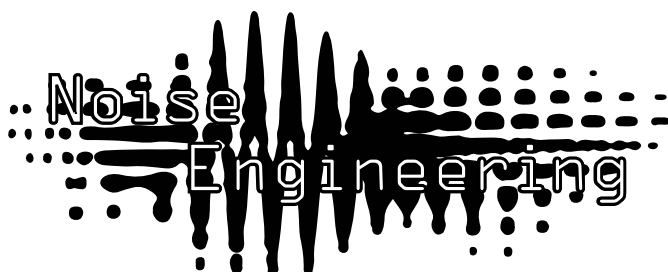
A final note. Some modules have other headers -- they may have a different number of pins or may say NOT POWER. In general, unless a manual tells you otherwise, DO NOT CONNECT THOSE TO POWER.



Warranty

Noise Engineering backs all our products with a product warranty: we guarantee our products to be free from manufacturing defects (materials or workmanship) for one year from the date of the original retail purchase (receipt or invoice required). The cost of shipping to Noise Engineering is paid by the user. Modules requiring warranty repair will either be repaired or replaced at Noise Engineering's discretion. If you believe you have a product that has a defect that is out of warranty, please contact us.

This warranty does not cover damage due to improper handling, storage, use, or abuse, modifications, or improper power or other voltage application.



Noise Engineering Horologic Solum

Master clock with multi-mode divider and expander

Interface

TEMPO

The Tempo knob allows for control of the speed of clock outs while the switch gives coarse control over three different speed modes. The Tempo switch adds in three different tempo speed ranges for coarse control.

INT/EXT

Choose the internal clock or chain multiple clocks together for added clock options. When in INT mode, the input jack acts as a CV control to the tempo, and the TEMPO knob acts as an offset. EXT mode expects an external clock, but this mode can also be used to stop the INT clock if no external clock is applied.

RST

Button and input jack: resets the clock to the beginning of the measure. The button also pauses the clock while it is held down.

204 (Divisor Mode)

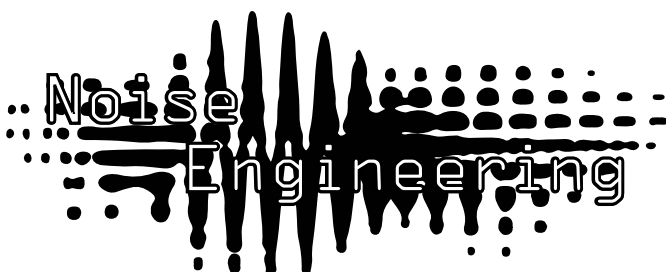
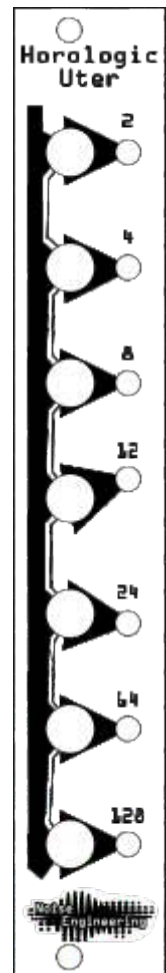
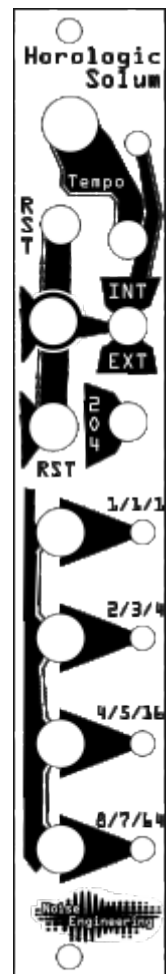
Horologic Solum has three divisor modes. It can be set to divide by powers of 2 (2, 4, 8), odd numbers (3, 5, 7), or powers of 4 (4, 16, 64). Each yields different rhythmic patterns.

CLOCK OUTS

Horologic Solum offers four clock outputs. The numbers next to the jacks correspond to the divisor used in each different mode.

Horologic Uter (optional expander)

Horologic Uter offers seven fixed-divisor clock outputs.

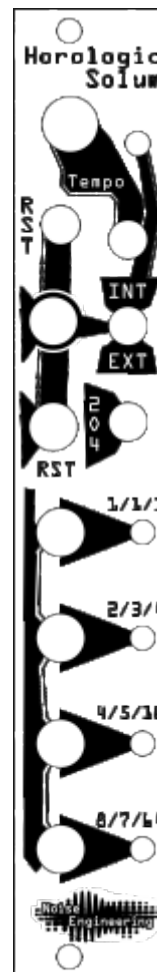


Noise Engineering Horologic Solum

Master clock with multi-mode divider and expander

Patch Tutorial

Horologic Solum and Horologic Uter are easy to use. Simply plug any output into any trigger input. Experiment with the Tempo dial and switch and Mode switch to get interesting, diverse, and useful patterns.



Special Thanks

Shawn Jimmerson
Skyler "kittyspit" King
William Mathewson
Mickey Bakas
Tyler Thompson
Alex Anderson

