

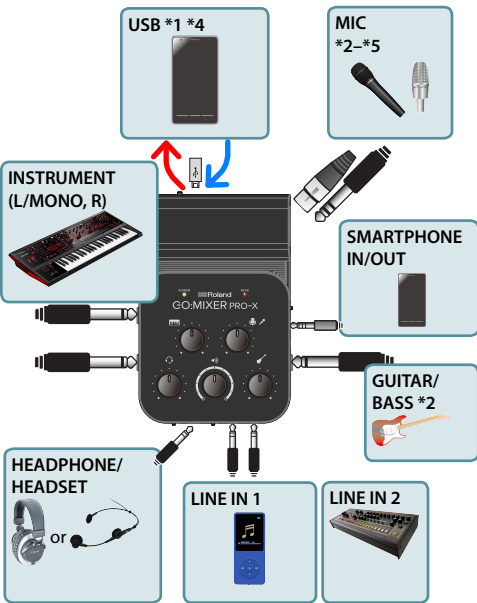
GO:MIXER PRO-X Owner's Manual

01



Before using this unit, carefully read the leaflet "USING THE UNIT SAFELY" and "IMPORTANT NOTES." After reading, keep the document(s) where it will be available for immediate reference.

Connecting Devices



- 1. Connect the instrument, mic, or audio player etc. that you want to record to the GO:MIXER PRO-X.**
- 2. Connect the included USB cable first to the GO:MIXER PRO-X and then to your smartphone (p. 6).**

- * If you are unable to record on your smartphone, slowly repeat step 2 once again.
- * To prevent malfunction and equipment failure, always turn down the volume, and turn off all the units before making any connections.
- * Before turning the unit on/off, always be sure to turn the volume down. Even with the volume turned down, you might hear some sound when switching the unit on/off. However, this is normal and does not indicate a malfunction.
- * If operating on batteries, the POWER indicator blinks when the batteries run low. If you continue using the unit in this state, the power automatically turns off after approximately one minute. Replace the battery as soon as possible.
- * In some cases, noise might be heard when you connect a smartphone, or when you start up or operate an app.
- * The POWER indicator may flash twice when you connect your smartphone if the smartphone's batteries have degraded. This is not a malfunction.

- (*1) Connect only the included cable to this unit's USB port. Also, do not connect the included cable to any device other than this unit (p. 6).
- (*2) You must connect your guitar, bass, or mic to this jack. If a mic and/or guitar are not connected, turn the [GUITAR/BASS] knob, [MIC] knob, or [HEADSET MIC] knob all the way to the left (the minimum setting). If the knob is not at the minimum setting, noise might enter the signal.
- (*3) Pin assignment of MIC connector (XLR, TRS).

- 1: GND
- 2: HOT
- 3: COLD



Tip: HOT

Sleeve: GND



Ring: COLD

- (*4) If you're using a condenser mic that requires an external power supply, set the [PHANTOM POWER] switch to "48 V."
- (*5) If you need to supply phantom power when using an iPhone or iPad, install batteries in this unit. (If batteries are not installed, phantom power cannot be supplied even if the [PHANTOM POWER] switch is set to "48 V." In this case, the POWER indicator blinks.)
If you're using an Android smartphone, phantom power can be supplied both when you're using batteries and when power is supplied from the smartphone.

Phantom power supply conditions	Android	iPhone, iPad
Using batteries	✓	✓
Supplying power from the smartphone (USB)	✓	-

Connecting This Unit to Your Smartphone with an Analog Cable

This unit includes a cable for making an analog connection (3.5 mm TRRS audio cable) to your smartphone.



- * A single-channel (mono) signal is sent to your smartphone.
- * For smartphones that do not have an earphones jack, a Lightning-3.5 mm headphone jack adapter or a USB-C to 3.5 mm headphone jack adapter (both commercially available) is required.
- * If you are using the SMARTPHONE IN/OUT jack, operate this unit on battery power.

Connecting a Smartphone

Three USB cables for connection to a smartphone are included with this device.

By using these USB cables, you can supply power from a connected smartphone to this device.

Connecting an iPhone or iPad

This is a Lightning–USB cable for connecting this device to an iPhone or iPad.



Connecting an Android Smartphone

This is a USB cable for connecting this device to a smartphone equipped with a USB Type-C® connector.



- * When power is supplied to this device from a smartphone, the smartphone's battery is consumed more heavily than usual.
- * Some Android smartphones do not offer USB connectivity. For these models, connect a 3.5 mm TRRS audio cable to the earphones jack of the smartphone (p. 5).

MEMO

For information about smartphone compatibility, access the following link.

<https://roland.cm/gomixerproxcp>

Adjusting the Volume

Adjust the knob so that the PEAK indicator lights briefly when your performance is loudest.

HEADSET
MIC



INSTRUMENT
(L/MONO, R)



PEAK 

If this stays lit, the sound is too loud.



MIC



GUITAR/
BASS *2



HEADPHONE/
SMARTPHONE OUT *1



- (*1) The [HEADPHONE/SMARTPHONE OUT] knob adjusts the overall volume that is recorded.
- (*2) The sound distorts if you turn the knob up too high. Adjust the knob so that the sound doesn't distort, and raise the volume using the [HEADPHONE/SMARTPHONE OUT] knob.

MEMO



To adjust the volume of the devices connected to LINE IN 1 and LINE IN 2, use the volume controls of those devices.

Record

Recording with a Camera App

When you're ready, use an app (such as a video camera) on your smartphone to record.

- * Some Android smartphones do not offer USB connectivity. For these models, connect a 3.5 mm TRRS audio cable to the earphones jack of the smartphone (p. 5).



Recording with the 4XCAMERA App

"4XCAMERA" is an app that lets you record video on your iPhone, iPad, or Android.

- * Some Android smartphones do not offer USB connectivity. For these models, connect a 3.5 mm TRRS audio cable to the earphones jack of the smartphone (p. 5).



Download on the
App Store



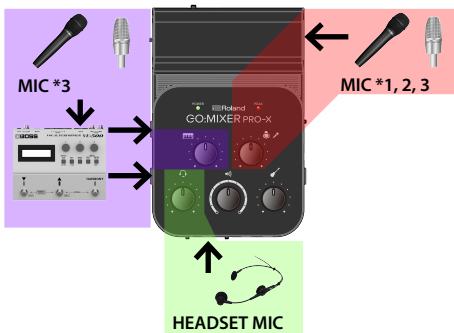
GET IT ON
Google Play

Connection Examples

Here are some examples of connecting mics or instruments to this device.

Make connections and settings as appropriate for the equipment that you're using.

Connecting a Mic



- (*1) If you're using a condenser mic that requires an external power supply, set the [PHANTOM POWER] switch to "48 V."
- (*2) If you need to supply phantom power when using an iPhone or iPad, install batteries in this unit. (If batteries are not installed, phantom power cannot be supplied even if the [PHANTOM POWER] switch is set to "48 V." In this case, the POWER indicator blinks.)
If you're using an Android smartphone, phantom power can be supplied both when you're using batteries and when power is supplied from the smartphone.

Phantom power supply conditions	Android	iPhone, iPad
Using batteries	✓	✓
Supplying power from the smartphone (USB)	✓	-

- (*3) Connect a mic going through an effect unit to the INSTRUMENT jack.

Connecting a Guitar or Bass



- (*4) If you're routing your guitar (or bass) through an effect device, connect it to the INSTRUMENT jacks.
- (*5) When connecting a guitar or bass with an active pickup, use the [PAD GUITAR/BASS] switch to reduce the input signal to lower the amount of distortion.



Connecting to the Headphone Jack of an Audio Player or Computer



LINE IN 1, LINE IN 2

Connecting a Keyboard or Effect Unit

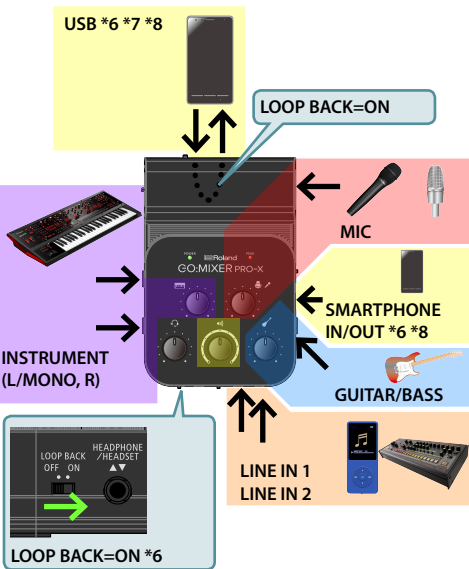


Connecting a Headset or Headphones

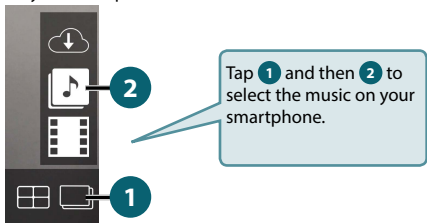


Recording a Mix of Instrumental Performance and Smartphone Music

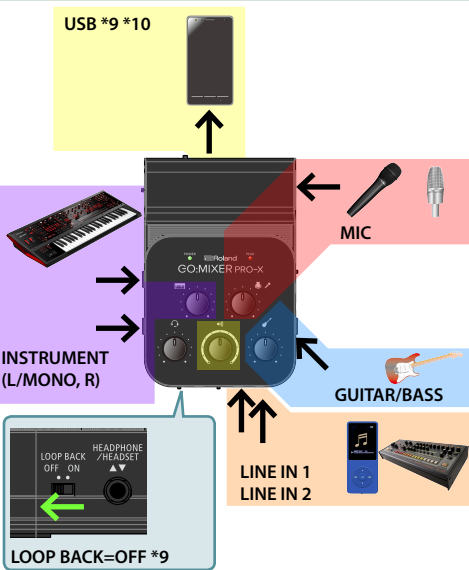
With the 4XCAMERA app, you can mix the sound from this unit with the music playing on your smartphone.



- (*6) If you want to record video using your camera app or 4XCAMERA while playing back music from your smartphone, turn the [LOOP BACK] switch "ON."
- (*7) Audio is output to the smartphone as two channels (stereo).
- (*8) If you are using the 4XCAMERA app, select some music on your smartphone.



Multitrack Recording with a DAW



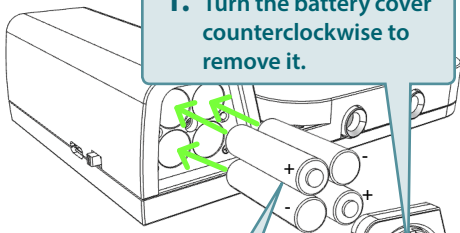
(*9) If you want to use a DAW app to record your performance, set the [LOOP BACK] switch to the "OFF" position. In this case, you can't use the [HEADPHONE/SMARTPHONE OUT] knob to control the volume of the smartphone that's connected to the USB port (p. 22).

(*10) Audio is output to the smartphone as two channels (stereo).

Using Batteries

If you're not supplying power from the smartphone, install batteries in this unit.

1. Turn the battery cover counterclockwise to remove it.



2. Insert batteries as shown in the illustration (pay attention to the polarity).

3. Turn the battery cover clockwise to attach it.



4. Set the [BATTERY] switch to the “ON” position. *1



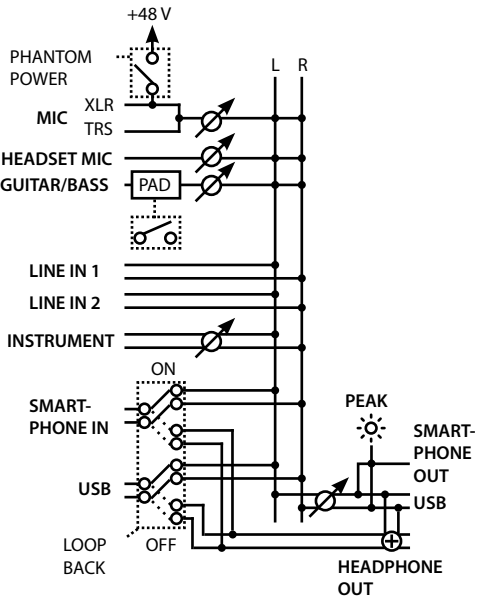
(*1) Don't operate the [BATTERY] switch while a smartphone is connected. Doing so might destabilize the smartphone's operation.

- * If operating on batteries, the POWER indicator blinks when the batteries run low. If you continue using the unit in this state, the power automatically turns off after approximately one minute. Replace the battery as soon as possible.
- * If you handle batteries improperly, you risk explosion and fluid leakage. Make sure that you carefully observe all of the items related to batteries that are listed in leaflet “USING THE UNIT SAFELY” and “IMPORTANT NOTES.”

MEMO

- If you're supplying power from the smartphone to this unit, set the [BATTERY] switch to the “OFF” position. In this case, use the included USB cable.
- The smartphone cannot be recharged from this unit.

Block Diagram



Main Specification

Number of Audio Channels	Input	11 channels
	Output	3 channels
Connectors	INSTRUMENT (L/MONO, R) jacks	1/4-inch phone type
	LINE IN 1 jack	Stereo miniature phone type
	LINE IN 2 jack	Stereo miniature phone type
	GUITAR/BASS jack	1/4-inch phone type (supports high impedance)
	SMARTPHONE IN/OUT jack	Stereo miniature phone type (Stereo, CTIA)
	MIC jack	Combo type (XLR, 1/4-inch TRS phone, phantom power DC 48 V, 6 mA max.)
	HEADPHONE/HEADSET jack	Stereo miniature phone type (Stereo, CTIA)
	USB port	USB Micro-B type

Power Supply	USB Bus Power Alkaline battery (AAA, LR03) x 4 Rechargeable Ni-MH battery (AAA, HR03) x 4
Battery life for continuous use	Approximately 4 hours * When setting the [BATTERY] switch to the "ON" position. * Differs depending on the conditions of use * Alkaline battery
Current Draw	170 mA
Dimensions	104 (W) x 155 (D) x 41 (H) mm 4-1/8 (W) x 6-1/8 (D) x 1-5/8 (H) inches
Weight (excluding batteries and cables)	215 g 8 oz
Accessories	Leaflet "Downloading the Owner's Manual"
	Leaflet "USING THE UNIT SAFELY"
	Lightning to USB micro-B type cable
	USB Type-C® to USB micro-B type cable 3.5 mm TRRS audio cable

* This document explains the specifications of the product at the time that the document was issued. For the latest information, refer to the Roland website.

<https://www.roland.com/>