

PHASE SHIFTER

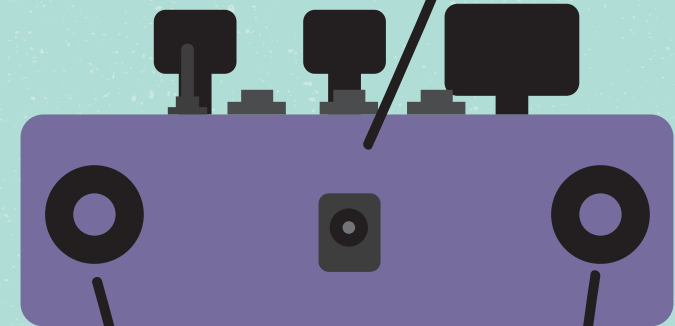
LETHARGY

無氣力

Lethargy derives from the greek word for forgetfulness, "Lethe". It is a state of being drowsy and dull. The feeling of having little energy or of being unable or unwilling to do anything.

Accepts +/- 5V for manual
Accepts +/- 5V for rate
Sends +/- 5V

9VDC center pin negative standard effect pedals power



Balance between LFO amount and Manual control
At max Amount, Manual has no effect

Set the Initial Phase Shift degrees
Like you would control the Cutoff frequency of a filter

Set the amount of Feedback
No Feedback gives a smooth vibe effect. Also at hot input signals, too much Feedback may cause unwanted distortion

ON/OFF footswitch
Depending on the effect's settings, while switching, a pop might be audible. This is caused due to the instant phase degrees

Accepts signals up to 1,8Vpp. Beyond that an attenuation in the input level may be required so as to avoid unwanted distortion.

Choose between the 2 LFO waves
Square wave might be clicky

Set the LFO Rate from very (very!) slow up to FM
On effect power up, Rate might need a full clockwise turn, for the LFO to be refreshed

SPECIFICATIONS

- Buffered CMOS Bypass
- Mono TS 6,4mm jacks (unbalanced)
- Works with 9VDC center pin negative power supply
- Current draw: 65mA
- Dimensions: 14x10x5 cm
- Weight: 0,525 kg

A FEW PRESETS JUST TO START WITH

LETH ARGY

無氣力

CASUAL PHASE SHIFT EFFECT



Adjust Rate as desired

HEAVY & SLOW PHASE SHIFT



Adjust Rate as desired. Manage Feedback at hot inputs

PITCH VIBRATO



Adjust Rate as desired

FM MODULATOR



Set Rate so as to match your base note. You can also use the triangle waveform

FIXED PHASE DEGREES



Adjust feedback to add color, and set Manual to desired degrees

EXTREME SHIFTING



Play around with different Rates

RYTHMIC PHASING



LFO amount will determine each beat's color. Adjust Rate as desired