



ARTIST SERIES™



Thank you for purchasing this product. Before using the product, read through the user manual to ensure that you will use the product correctly. Please keep this manual for future reference.

Features

- Ideal for drummers, keyboard players or anyone requiring hands-free operation
- Comfortable, unobtrusive headband design with side-of-mouth pickup
- Belt-mounted power module operates on battery or phantom power
- Cardioid polar pattern improving isolation of desired sound source
- Rugged design and construction for reliable performance
- ATM73a wired version's power module (AT8531) includes a switchable 80 Hz high-pass filter minimizes pickup of undesired low-frequency sounds
- Wireless version equipped with cW-style locking or cH-style screw-down 4-pin termination for Audio-Technica wireless systems

Notes on use

ATM73a wired version includes a power module AT8531 that requires 11V to 52V DC phantom power, or a 1.5V AA battery for operation. A battery need not be in place for phantom power operation. The output of the power module is a 3-pin XLRM-type connector.

An integral 80Hz high-pass filter provides easy switching from a flat frequency response to a low-end roll-off. The roll-off position reduces the pickup of low-frequency ambient noise (such as traffic, air-handling systems, etc.), room reverberation and mechanically coupled vibrations.

ATM73cW and ATM73cH wireless versions do not contain power module and includes clothing clip and metal-frame pop filter only. 1.4 m cable terminated with locking 4-pin connector. The connector is also compatible with Audio-Technica cW and cH type body-pack transmitters.

Avoid leaving the microphone in the open sun or in areas where temperatures exceed 43°C for extended periods. Extremely high humidity should also be avoided.

Safety precaution

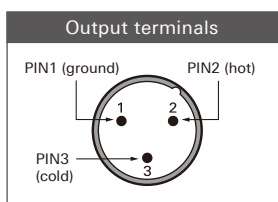
Although this product was designed to be used safely, failing to use it correctly may result in an accident. To ensure safety, observe all warnings and cautions while using the product.

Cautions for the product

- Do not subject the product to strong impact to avoid malfunction.
- Do not disassemble, modify or attempt to repair the product.
- Do not handle the product with wet hands to avoid electric shock or injury.
- Do not store the product under direct sunlight, near heating devices or in a hot, humid or dusty place.

Connection procedure

Connect the output terminals of AT8531 power module to a device that has a microphone input (balanced input) compatible with a phantom power supply. The output connector is an XLRM-type with polarity as shown in the figure below.



This product requires 48 V DC phantom power.

Specifications

Element	Fixed-charge back plate, permanently polarized condenser
Polar pattern	Cardioid
Frequency response	40 - 15,000 Hz
Low Frequency response	80 Hz, 18 dB/octave (wired only)
Open circuit sensitivity	Phantom: -55 dB (1.7 mV) re 1V at 1 Pa Battery: -56 dB (1.5 mV) re 1V at 1 Pa
Impedance	Phantom: 200 ohms Battery: 270 ohms
Maximum input sound level	Phantom: 146 dB SPL, 1 kHz at 1% T.H.D. Battery: 132 dB SPL, 1 kHz at 1% T.H.D.
Dynamic range (typical)	Phantom: 111 dB, 1 kHz at Max SPL Battery: 97 dB, 1 kHz at Max SPL
Signal-to-noise ratio	59 dB, 1 kHz at 1 Pa
Phantom power requirements	11-52 V DC, 2 mA typical (wired only)
Battery Type	1.5V AA (wired only)
Battery Current / Life	0.4 mA / 1200 hours (wired only) (alkaline)
Switch	Flat, roll-off (wired only)
Weight	Microphone: 31 g Power module (wired only): 139 g
Dimensions	Microphone: 10.0 mm diameter Headset: 165.0 mm nominal at widest point, 67.0 mm boom Power module: 84.0 mm (H), 63.0 mm (W), 22.0 mm (D)
Output connector	Integral 3-pin XLRM-type (Power module)
Cable	1.4 m long (permanently attached to microphone), 2.6 mm diameter, 2-conductor shielded cable (termination dependent)
Included accessories	AT8125 windscreen; AT8128 windscreen; (wired only) - AT8531 power module (ATM73a)



AT8531



AT8125



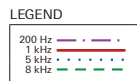
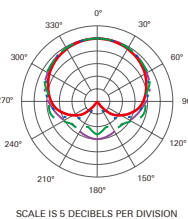
AT8128

• 1 Pascal = 10 dynes/cm² = 10 microbars = 94 dB SPL

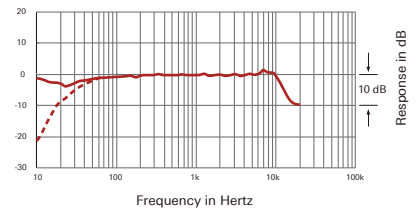
* Typical, A-weighted, using Audio Precision System One.

For product improvement, the product is subject to modification without notice.

Polar pattern



Frequency response



Cable Terminations

ATM73cW – Terminated with locking 4-pin connector for use with A-T UniPak[®] body-pack transmitters



	Pin 1	Pin 2	Pin 3	Pin 4
Function	Ground / Shield	Instrument	Mic Audio	Blas + In
Wire Colour	Copper Wire	Jumper to Pin 1	Yellow	Red

ATM73cH – Terminated with locking 4-pin connector for use with A-T cH body-pack transmitters



	Pin 1	Pin 2	Pin 3	Pin 4
Function	Ground / Shield	Instrument	Mic Audio	Blas + In
Wire Colour	Copper Wire	Jumper to Pin 1	Yellow	Red

Audio-Technica Corporation

2-46-1 Nishi-naruse, Machida, Tokyo 194-8666, Japan

©2017 Audio-Technica Corporation

Global Support Contact: www.at-globalsupport.com



ARTIST SERIES™



感谢您购买本产品。在使用产品之前，请全文浏览本用户手册以确保您将正确地使用本产品。请妥善保管本手册，以供将来参考。

产品特点

- 专为鼓手、键盘手及其他乐手提供免提型话筒收音
- 提供舒适及不显眼的设计，及近距离收音
- 配置盒式供电模组，可使用电池或幻象供电操作
- 心形指向性收音，能有效减低旁边及后方的杂声干扰
- 坚固的设计和结构，性能可靠
- ATM73a 有线版本的电源模块(AT8531)设有高通滤波器，可提供陡峭的低频衰减，从而改善声音拾取，而不会影响语音质量
- 无线版本的锁固式4针话筒输出端子，可配套连接有有线供电模组，或所有鐵三角 Audio-Technica cW 或 cH 型的盒式无线发射机

使用注意事项

ATM73a 有线版本配有一个AT8531供电模组，需要提供11V至52V幻象供电或1.5V AA电池操作，当使用幻象电源操作时，可以不安装电池，供电模组的输出端为内置3针XLRM卡农公头。

供电模组内置高通滤波电路，可轻易由平直的频率响应，开启为于80 Hz以下衰减的收音效果，应用高通滤波器可减低话筒在近距离讲话收音时的喷气声，并可减低收音环境中低频噪声(如外间汽车引擎声，空调系统的风声等)，房间中的回声及机械性的震动声。

ATM73cW 和 ATM73cH 无线版本不带供电模组，但提供领带夹和金属网防风罩，长1.4m音频线输出，可配置于所有鐵三角Audio-Technica cW 或 cH 型的盒式无线发射机中。

把话筒暴露于高温中可能导致输出电平逐渐及永久性减弱，应避免将话筒留在日晒的地方或长时间置于温度超过43°C的地方，而极高湿度也应避免。

安全预防措施

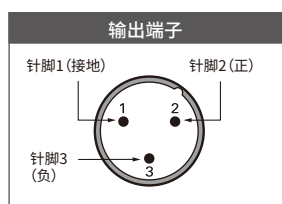
虽然本产品采用安全设计，但使用不当仍可能发生事故。为了确保安全，使用本产品时请注意全部警告和提醒。

本产品注意事项

- 切勿让本产品遭受强烈冲击，以避免发生故障。
- 切勿拆开、改装或尝试维修本产品。
- 切勿用湿手握持本产品，以免触电或受伤。
- 切勿将本产品存放在阳光直射的地方、加热装置附近或者炎热、潮湿或多尘的地方。

连接步骤

将AT8531 供电模组的输出端子连接到具有兼容幻象电源的话筒输入（平衡输入）的设备。输出接口是 XLRM 型接口，其极性如下图所示。



本产品使用直流 48V 幻象电源。

规格

元件	固定充电背板，静电型电容式
指向性	心形指向性
频率响应	40 - 15,000 Hz
高通滤波	80 Hz, 18 dB/octave (有线型号)
开路灵敏度	-55 dB (1.7mV) 以 1V 于 1Pa (幻象供电) -56 dB (1.5mV) 以 1V 于 1Pa (电池)
输出阻抗	200 欧姆 (幻象供电) 270 欧姆 (电池)
最大承受声压	146 dB 声压, 1 kHz 于 1% T.H.D. (幻象供电) 132 dB 声压, 1 kHz 于 1% T.H.D. (电池)
动态范围 (典型)	111 dB, 1 kHz 于最高声压 (幻象供电) 97 dB, 1 kHz 于最高声压 (电池)
信噪比	59 dB, 1 kHz 于 1 Pa
幻象供电	直流 11-52V, 2mA 典型 (有线型号)
电池	1.5V AA型 5号电池 (有线型号)
耗电/电池寿命	0.4 mA / 1200小时 (有线型号) (碱性电池)
开关	平直，高通滤波 (有线型号)
重量	收音头(不含连线): 31 克 供电模组 (有线型号): 139 克
尺寸	收音头: 直径 10.0 mm 头环: 宽度 165.0 mm, 话筒杆 67.0 mm 供电模组: 高 84.0 mm, 宽 63.0 mm, 厚 22.0 mm
输出端子 (供电模组)	内置式 3 针卡农公头
连接线	长 1.4 米 (固定连接于话筒), 直径 2.6 mm, 2芯屏蔽式连线并配置连接端子 (连接端子类型视乎不同型号)
附带配件	AT8125 防风罩; AT8128 防风罩; (有线型号)- AT8531 供电模组



AT8531

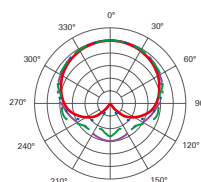


AT8125

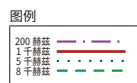
AT8128

* 1 帕 = 10 达因 / 平方厘米 = 10 微巴 = 94 dB SPL
* 典型, A 计权, 使用 Audio Precision System One
因产品改进, 本产品会随时改装, 恕不另行通知。

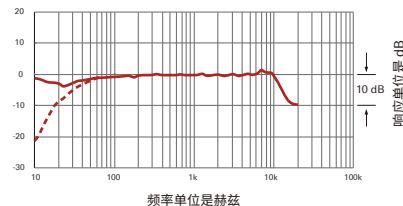
指向性



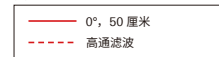
比例是每分隔线 5 分贝



频率响应



图例



接线端子

ATM73cW - 以锁固式4针端子，使用于鐵三角 A-T UniPak® 盒式无线发射机



针脚1	针脚2	针脚3	针脚4
功能	地线 / 屏蔽	乐器	话筒音频
导线颜色	裸铜线	与针脚1 跳线	黄色
			红色

ATM73cH - 以锁固式4针端子，使用于鐵三角 A-T cH 型 盒式无线发射机



针脚1	针脚2	针脚3	针脚4
功能	地线 / 屏蔽	乐器	话筒音频
导线颜色	裸铜线	与针脚1 跳线	黄色
			红色