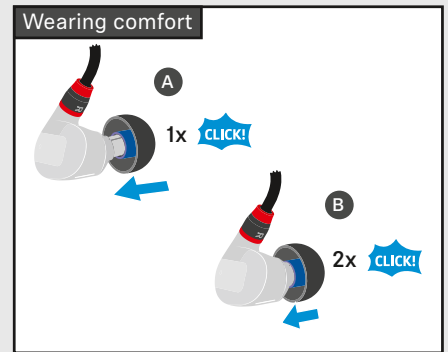
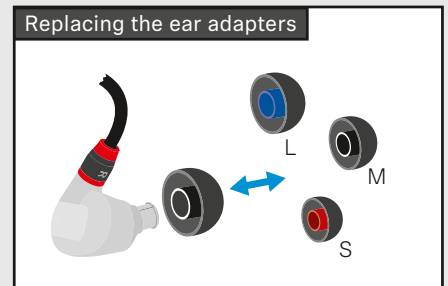
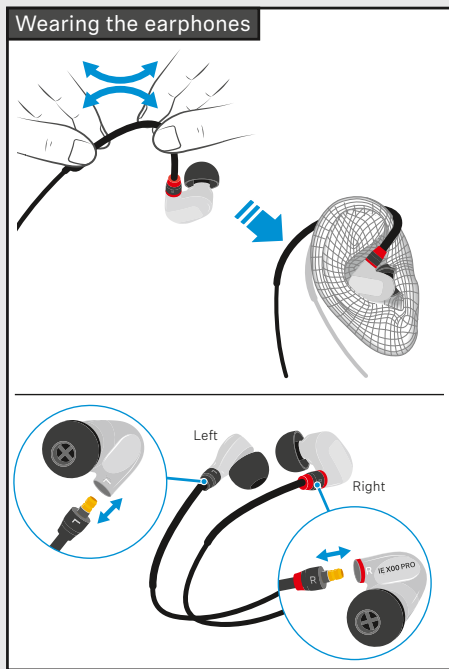
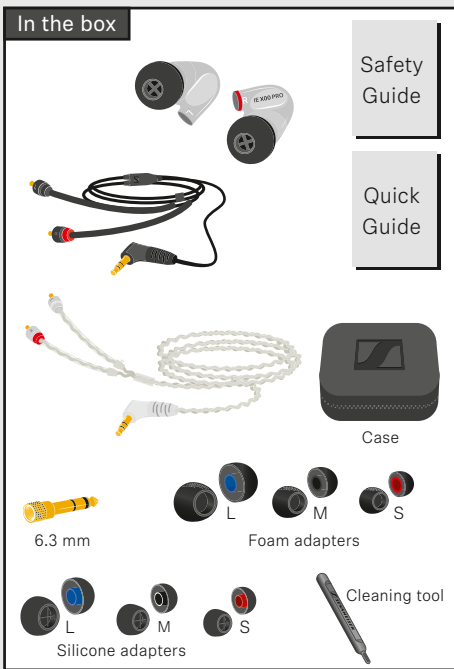




# IE 400 PRO IE 500 PRO

**Quick Guide** | Kurzanleitung | Guide rapide | Guida rapida | Guía de inicio rápido |  
Guia rápido | Beknopte handleiding | Krótka instrukcja obsługi | Snabbguide | Kort  
vejledning | Πίκαοήγε | Γρήγορος οδηγός | Kısa Kılavuz | Краткая инструкция | 快速指南 |  
快速使用指南 | クイックガイド | 요약 설명서 |

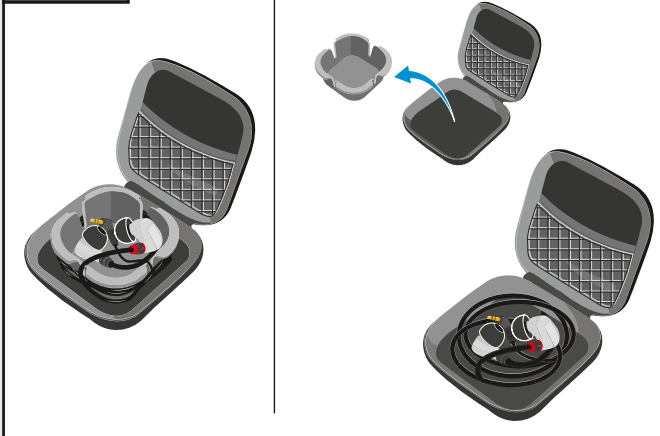


Sennheiser electronic GmbH & Co. KG

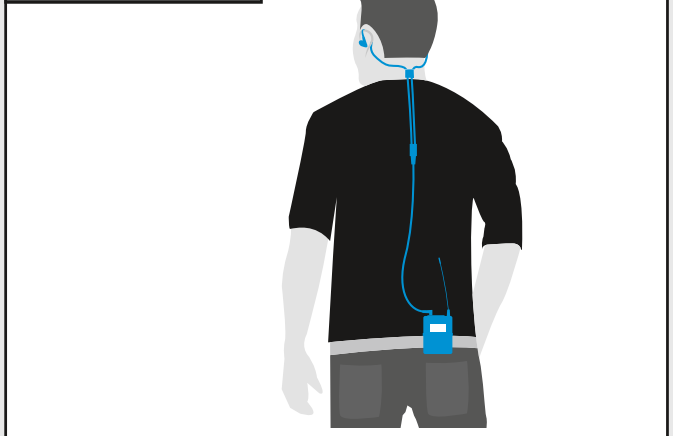
Am Labor 1, 30900 Wedemark, Germany, [www.sennheiser.com](http://www.sennheiser.com)  
Publ. 11/18, 578646/A01

**SENNHEISER**

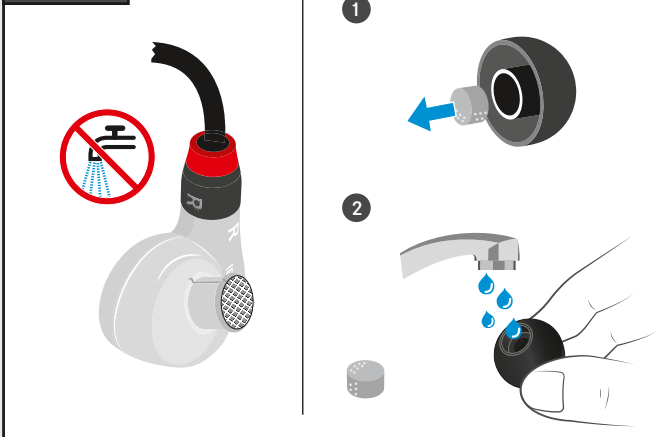
### Transport



### Optimum cable routing



### Cleaning



### Specifications

IE 400 PRO | IE 500 PRO

Frequency response	6 Hz - 19 kHz		6 Hz - 20 kHz
Impedance	16 $\Omega$		
Sound pressure level (1 kHz/1 Vrms)	123 dB		126 dB
THD (1 kHz, 94 dB)	< 0.08 %		
Noise attenuation	up to 26 dB		
Magnetized field strength	2 mT		
Operating temperature	-5 °C to +50 °C		
Storage temperature	-20 °C to +70 °C		
Relative air humidity	< 95 %		